

Authorized distributor

ELECTRICAL PRODUCTS CATALOG



汉纳森电气
HANYSEN
PERFECT ELECTRICAL SOLUTION

Tel/Fax:+86 571 82675286
Cell/Wechat:+86 18058129110
Rm1405, Office Building B, Henglong Square,
Xiaoshan District, Hangzhou, Zhejiang, China
info@hanyesen.net benson@hanyesen.net

WWW.HANYSEN.COM

EMT Conduit-Hot-Dip-Galvanized
EMT Tubo Hot-Dip-Galvanizado

UL Listed to Underwriters Laboratories Safety Standard UL 797
Manufactured in accordance with ANSI C80.3

CAT#	Trade Size	Outside Dia.	Wall Thickness	Length
		mm	mm	
EPH050	1/2"	17.93	1.07	10
EPH075	3/4"	23.42	1.24	10
EPH100	1"	29.54	1.45	10
EPH125	1-1/4"	38.35	1.65	10
EPH150	1-1/2"	44.20	1.65	10
EPH200	2"	55.80	1.65	10
EPH250	2-1/2"	73.03	1.83	10
EPH300	3"	88.90	1.83	10
EPH350	3-1/2"	101.60	2.11	10
EPH400	4"	114.30	2.11	10



EMT Conduit-Pre-Galvanized-Standard
EMT Tubo Galvanizado

CAT#	Trade Size	Outside Dia.	Wall Thickness	Length
		mm	mm	
EPS050	1/2"	17.93	1.07	10
EPS075	3/4"	23.42	1.24	10
EPS100	1"	29.54	1.45	10
EPS125	1-1/4"	38.35	1.65	10
EPS150	1-1/2"	44.20	1.65	10
EPS200	2"	55.80	1.65	10
EPS250	2-1/2"	73.03	1.83	10
EPS300	3"	88.90	1.83	10
EPS350	3-1/2"	101.60	2.11	10
EPS400	4"	114.30	2.11	10

EMT Conduit-Pre-Galvanized-Economical
EMT Tubo Galvanizado-Tipo Economico

CAT#	Trade Size	Outside Dia. mm	Wall Thickness (mm)		Length mm
			(1)	(2)	
EPT050	1/2"	17.93	0.9	0.7	3000
EPT075	3/4"	23.42	1.1	0.9	3000
EPT100	1"	29.54	1.1	1.0	3000
EPT125	1-1/4"	38.35	1.4	1.1	3000
EPT150	1-1/2"	44.20	1.4	1.3	3000
EPT200	2"	55.80	1.4	1.3	3000
EPT250	2-1/2"	73.03	1.6	1.3	3000
EPT300	3"	88.90	1.6	1.3	3000
EPT350	3-1/2"	101.60	1.6	1.3	3000
EPT400	4"	114.30	1.6	1.3	3000

EMT Elbow 90° - Pre-Galvanized
Curva EMT 90°



CAT#	Trade Size	Radius (mm)
EE050	1/2"	102
EE075	3/4"	114
EE100	1"	146
EE125	1-1/4"	184
EE150	1-1/2"	210
EE200	2"	241
EE250	2-1/2"	267
EE300	3"	330
EE400	4"	406

Hot-dip galvanized is available as required

EMT Elbow 45° - Pre-Galvanized
Curva EMT 45°



CAT#	Trade Size	Radius (mm)
HEE050	1/2"	304
HEE075	3/4"	380
HEE100	1"	457
HEE125	1-1/4"	609
HEE150	1-1/2"	762
HEE200	2"	914

Hot-dip galvanized is available as required

EMT Connector Set Screw Type

Conector EMT Con Tornillo
Material: Steel with Zinc Coating
Standard: UL 514B
1/2"~1" with 1 Screw
1-1/4"~4" with 2 Screws



CAT#	Trade Size
S3050	1/2"
S3075	3/4"
S3100	1"
S3125	1-1/4"
S3150	1-1/2"
S3200	2"
S3250	2-1/2"
S3300	3"
S3350	3-1/2"
S3400	4"

EMT Connector Compression Type

Conector EMT A Compresion
Material: Steel with Zinc Coating
Standard: UL 514B



CAT#	Trade Size
S3C050	1/2"
S3C075	3/4"
S3C100	1"
S3C125	1-1/4"
S3C150	1-1/2"
S3C200	2"
S3C250	2-1/2"
S3C300	3"
S3C350	3-1/2"
S3C400	4"

EMT Coupling Set Screw Type

Copla EMT Con Tornillo
Material: Steel with Zinc Coating
Standard: UL 514B
1/2"~1" with 2 Screws
1-1/4"~4" with 4 Screws



CAT#	Trade Size
S4050	1/2"
S4075	3/4"
S4100	1"
S4125	1-1/4"
S4150	1-1/2"
S4200	2"
S4250	2-1/2"
S4300	3"
S4350	3-1/2"
S4400	4"

EMT Coupling Compression Type

Copla EMT A Compresion
Material: Steel with Zinc Coating
Standard: UL 514B



CAT#	Trade Size
S4C050	1/2"
S4C075	3/4"
S4C100	1"
S4C125	1-1/4"
S4C150	1-1/2"
S4C200	2"
S4C250	2-1/2"
S4C300	3"
S4C350	3-1/2"
S4C400	4"

EMT Connector With Throat Set Screw Type

Conector EMT Con Tornillo y Sello
Material: Steel with Zinc Coating
Standard: UL 514B
1/2"~1" with 1 Screw
1-1/4"~4" with 2 Screws



CAT#	Trade Size
S3I050	1/2"
S3I075	3/4"
S3I100	1"
S3I125	1-1/4"
S3I150	1-1/2"
S3I200	2"
S3I250	2-1/2"
S3I300	3"
S3I350	3-1/2"
S3I400	4"

EMT Connector With Throat Compression Type

Conector EMT A Compresion Con Sello
Material: Steel with Zinc Coating
Standard: UL 514B



CAT#	Trade Size
S3CI050	1/2"
S3CI075	3/4"
S3CI100	1"
S3CI125	1-1/4"
S3CI150	1-1/2"
S3CI200	2"
S3CI250	2-1/2"
S3CI300	3"
S3CI350	3-1/2"
S3CI400	4"

EMT Connector Screw Type

Conector EMT Con Tornillo

Material: Zinc
Standard: UL 514B
1/2"~1" with 1 Screw
1-1/4"~4" with 2 Screws



CAT#	Trade Size
Z3050	1/2"
Z3075	3/4"
Z3100	1"
Z3125	1-1/4"
Z3150	1-1/2"
Z3200	2"
Z3250	2-1/2"
Z3300	3"
Z3350	3-1/2"
Z3400	4"

EMT Connector Compression Type

Conector EMT A Compresion

Material: Zinc
Standard: UL 514B



CAT#	Trade Size
Z7050	1/2"
Z7075	3/4"
Z7100	1"
Z7125	1-1/4"
Z7150	1-1/2"
Z7200	2"

EMT Connector Screw Type

Conector EMT Con Tornillo

Material: Aluminum
1/2"~1" with 1 Screw
1-1/4"~4" with 2 Screws



CAT#	Trade Size
A3050	1/2"
A3075	3/4"
A3100	1"
A3125	1-1/4"
A3150	1-1/2"
A3200	2"
A3250	2-1/2"
A3300	3"
A3350	3-1/2"
A3400	4"

EMT Coupling Screw Type

Copla EMT Con Tornillo

Material: Aluminum
1/2"~1" with 2 Screws
1-1/4"~4" with 4 Screws



CAT#	Trade Size
A4050	1/2"
A4075	3/4"
A4100	1"
A4125	1-1/4"
A4150	1-1/2"
A4200	2"
A4250	2-1/2"
A4300	3"
A4350	3-1/2"
A4400	4"

EMT Coupling Screw Type

Copla EMT Con Tornillo

Material: Zinc
Standard: UL 514B
1/2"~1" with 2 Screws
1-1/4"~4" with 4 Screws



CAT#	Trade Size
Z4050	1/2"
Z4075	3/4"
Z4100	1"
Z4125	1-1/4"
Z4150	1-1/2"
Z4200	2"
Z4250	2-1/2"
Z4300	3"
Z4350	3-1/2"
Z4400	4"

EMT Coupling Compression Type

Copla EMT A Compresion

Material: Zinc
Standard: UL 514B



CAT#	Trade Size
Z8050	1/2"
Z8075	3/4"
Z8100	1"
Z8125	1-1/4"
Z8150	1-1/2"
Z8200	2"

Service Entrance Cap Clamp Type

Cabeza Servicio Para EMT

Installation with EMT Conduit
Material: Aluminum



CAT#	Trade Size
CC050	1/2"
CC075	3/4"
CC100	1"
CC125	1-1/4"
CC150	1-1/2"
CC200	2"
CC250	2-1/2"
CC300	3"
CC350	3-1/2"
CC400	4"

EMT to EMT Elbow

Codo de Paso EMT a EMT

Material: Zinc

CAT#	Trade Size
ZE50	1/2"
ZE75	3/4"



Material: Zinc

CAT#	Trade Size
PEE50	1/2"
PEE75	3/4"
PEE10	1"



EMT Connector With Throat Screw Type

Conector EMT Con Tornillo y Sello

Material: Zinc
Standard: UL 514B
1/2"~1" with 1 Screw
1-1/4"~4" with 2 Screws



CAT#	Trade Size
Z3i050	1/2"
Z3i075	3/4"
Z3i100	1"
Z3i125	1-1/4"
Z3i150	1-1/2"
Z3i200	2"
Z3i250	2-1/2"
Z3i300	3"
Z3i350	3-1/2"
Z3i400	4"

EMT Connector With Throat Compression Type

Conector EMT A Compresion Con Sello

Material: Zinc
Standard: UL 514B



CAT#	Trade Size
Z7i050	1/2"
Z7i075	3/4"
Z7i100	1"
Z7i125	1-1/4"
Z7i150	1-1/2"
Z7i200	2"

EMT Strap 1 Hole

EMT Abrazadera 1 Agujero

Material: Steel with Zinc Coating



CAT#	Trade Size
SPE050	1/2"
SPE075	3/4"
SPE100	1"
SPE125	1-1/4"
SPE150	1-1/2"
SPE200	2"
SPE250	2-1/2"
SPE300	3"
SPE350	3-1/2"
SPE400	4"

EMT Strap 2 Holes

Abrazadera EMT 2 Agujeros

Material: Steel with Zinc Coating



CAT#	Trade Size
DPE050	1/2"
DPE075	3/4"
DPE100	1"
DPE125	1-1/4"
DPE150	1-1/2"
DPE200	2"
DPE250	2-1/2"
DPE300	3"
DPE350	3-1/2"
DPE400	4"

IMC (Pre-Galvanized)
IMC Tubo Galvanizado

Underwriters Laboratories Safety Standard UL 1242
Manufactured in accordance with ANSI C80.6

CAT#	Trade Size	Outside Dia.	Wall Thickness	Length
		mm	mm	
IPS050	1/2"	20.70	1.78	10
IPS075	3/4"	26.10	1.90	10
IPS100	1"	32.80	2.15	10
IPS125	1-1/4"	41.59	2.15	10
IPS150	1-1/2"	47.80	2.29	10
IPS200	2"	59.90	2.41	10
IPS250	2-1/2"	72.57	3.50	10
IPS300	3"	88.29	3.50	10
IPS350	3-1/2"	100.86	3.50	10
IPS400	4"	113.40	3.50	10



IMC (Hot-Dip Galvanized)
IMC Tubo Hot Dip Galvanizado

Underwriters Laboratories Safety Standard UL 1242
Manufactured in accordance with ANSI C80.6

CAT#	Trade Size	Outside Dia.	Wall Thickness	Length
		mm	mm	
IPH050	1/2"	20.70	2.00	10
IPH075	3/4"	26.10	2.00	10
IPH100	1"	32.80	2.25	10
IPH125	1-1/4"	41.59	2.25	10
IPH150	1-1/2"	47.80	2.50	10
IPH200	2"	59.90	2.50	10
IPH250	2-1/2"	72.57	3.50	10
IPH300	3"	88.29	3.50	10
IPH350	3-1/2"	100.86	3.50	10
IPH400	4"	113.40	3.50	10

RSC (Hot-Dip Galvanized)
Rigido Tubo Hot Dip Galvanizado

Underwriters Laboratories Safety Standard UL 6
Manufactured in accordance with ANSI C80.1

CAT#	Trade Size	Outside Dia.	Wall Thickness	Length
		mm	mm	
RPH050	1/2"	21.00	2.50	10
RPH075	3/4"	26.00	2.50	10
RPH100	1"	33.00	3.00	10
RPH125	1-1/4"	42.00	3.25	10
RPH150	1-1/2"	48.00	3.25	10
RPH200	2"	60.00	3.50	10
RPH250	2-1/2"	73.00	4.50	10
RPH300	3"	88.50	4.75	10
RPH400	4"	114.00	5.25	10
RPH600	6"	168.00	6.25	10

IMC Elbow 90° - Pre-Galvanized
Curva IMC 90°



CAT#	Trade Size	Radius (mm)
IRE050	1/2"	102
IRE075	3/4"	114
IRE100	1"	146
IRE125	1-1/4"	184
IRE150	1-1/2"	210
IRE200	2"	241
IRE250	2-1/2"	267
IRE300	3"	330
IRE400	4"	406

RSC Elbow 90° - Hot Dip Galvanized
Curva RSC 90°



CAT#	Trade Size	Radius (mm)
RE050	1/2"	102
RE075	3/4"	114
RE100	1"	146
RE125	1-1/4"	184
RE150	1-1/2"	210
RE200	2"	241
RE250	2-1/2"	267
RE300	3"	330
RE400	4"	406

IMC Elbow 45° - Pre-Galvanized
Curva EMT 45°



CAT#	Trade Size	Radius (mm)
HRE050	1/2"	304
HRE075	3/4"	380
HRE100	1"	457
HRE125	1-1/4"	609
HRE150	1-1/2"	762
HRE200	2"	914

Hot-dip galvanized is available as required

Hot-dip galvanized is available as required

IMC Connector Compression Type

Conector IMC Tipo de Compresión

Material: Steel with Zinc Coating



CAT#	Trade Size
I7050	1/2"
I7075	3/4"
I7100	1"
I7125	1-1/4"
I7150	1-1/2"
I7200	2"
I7250	2-1/2"
I7300	3"
I7350	3-1/2"
I7400	4"

IMC Coupling Compression Type

Copla IMC Tipo de Compresión

Material: Steel with Zinc Coating



CAT#	Trade Size
I8050	1/2"
I8075	3/4"
I8100	1"
I8125	1-1/4"
I8150	1-1/2"
I8200	2"
I8250	2-1/2"
I8300	3"
I8350	3-1/2"
I8400	4"

Service Entrance Cap Threaded Type

Cabeza Servicio Para IMC

Installation with IMC Conduit
Material: Aluminum



CAT#	Trade Size
CT050	1/2"
CT075	3/4"
CT100	1"
CT125	1-1/4"
CT150	1-1/2"
CT200	2"
CT250	2-1/2"
CT300	3"
CT350	3-1/2"
CT400	4"

Conduit Bushing

Monitores

Material: Zinc
Standard: UL 514B



CAT#	Trade Size
Q050	1/2"
Q075	3/4"
Q100	1"
Q125	1-1/4"
Q150	1-1/2"
Q200	2"
Q250	2-1/2"
Q300	3"
Q350	3-1/2"
Q400	4"

Conduit Bushing With Throat

Monitores Con Sello

Material: Zinc
Standard: UL 514B



CAT#	Trade Size
IB050	1/2"
IB075	3/4"
IB100	1"
IB125	1-1/4"
IB150	1-1/2"
IB200	2"
IB250	2-1/2"
IB300	3"
IB350	3-1/2"
IB400	4"

Grounding Bushing

Monitores Con Aislacion A Tierra

Material: Malleable Iron
Standard: UL 514B



CAT#	Trade Size
GB050	1/2"
GB075	3/4"
GB100	1"
GB125	1-1/4"
GB150	1-1/2"
GB200	2"
GB250	2-1/2"
GB300	3"
GB350	3-1/2"
GB400	4"

Steel Lock Nut

Contratuerca de Acero

Material: Steel with Zinc Coating
Standard: UL 514B



CAT#	Trade Size
LN050	1/2"
LN075	3/4"
LN100	1"
LN125	1-1/4"
LN150	1-1/2"
LN200	2"
LN250	2-1/2"
LN300	3"
LN350	3-1/2"
LN400	4"

Zinc Lock Nut

Contratuerca de Zinc

Material: Zinc
Standard: UL 514B



CAT#	Trade Size
LNZ050	1/2"
LNZ075	3/4"
LNZ100	1"
LNZ125	1-1/4"
LNZ150	1-1/2"
LNZ200	2"
LNZ250	2-1/2"
LNZ300	3"
LNZ350	3-1/2"
LNZ400	4"

IMC Strap 1 Hole

IMC Abrazadera 1 Agujero

Material: Steel with Zinc Coating



CAT#	Trade Size
SPR050	1/2"
SPR075	3/4"
SPR100	1"
SPR125	1-1/4"
SPR150	1-1/2"
SPR200	2"
SPR250	2-1/2"
SPR300	3"
SPR350	3-1/2"
SPR400	4"

IMC Strap 2 Holes

IMC Abrazadera 2 Agujeros

Material: Steel with Zinc Coating



CAT#	Trade Size
DPR050	1/2"
DPR075	3/4"
DPR100	1"
DPR125	1-1/4"
DPR150	1-1/2"
DPR200	2"
DPR250	2-1/2"
DPR300	3"
DPR350	3-1/2"
DPR400	4"

IMC Coupling

Copla IMC

Material: Steel with Zinc Coating
Standard: UL 1242



CAT#	Trade Size
IC050	1/2"
IC075	3/4"
IC100	1"
IC125	1-1/4"
IC150	1-1/2"
IC200	2"
IC250	2-1/2"
IC300	3"
IC350	3-1/2"
IC400	4"
IC500	5"
IC600	6"
IC800	8"
IC1000	10"

Rigid Coupling

Copla Rigido

Material: Steel with Zinc Coating
Standard: UL 1242



CAT#	Trade Size
RGC050	1/2"
RGC075	3/4"
RGC100	1"
RGC125	1-1/4"
RGC150	1-1/2"
RGC200	2"
RGC250	2-1/2"
RGC300	3"
RGC350	3-1/2"
RGC400	4"
RGC500	5"
RGC600	6"
RGC800	8"
RGC1000	10"

IMC to IMC Pull Elbow

Codo de Paso IMC a IMC

Material: Zinc



CAT#	Trade Size
PER50	1/2"
PER75	3/4"
PER10	1"

Reducing Bushing

Bushing de Reduccion

Material: Steel with Zinc Coating



CAT#	Trade Size
75050	3/4" x 1/2"
100050	1" x 1/2"
100075	1" x 3/4"
125050	1-1/4" x 1/2"
125075	1-1/4" x 3/4"
125100	1-1/4" x 1"
150050	1-1/2" x 1/2"
150075	1-1/2" x 3/4"
150100	1-1/2" x 1"
150125	1-1/2" x 1-1/4"
200050	2" x 1/2"
200075	2" x 3/4"
200100	2" x 1"
200125	2" x 1-1/4"
200150	2" x 1-1/2"
250200	2-1/2" x 2"
300150	3" x 1-1/2"
300200	3" x 2"
400200	4" x 2"
400300	4" x 3"

Threaded Hub

Conector Hub Estanco

Material: Zinc
Standard: UL 514B



CAT#	Trade Size
TH050	1/2"
TH075	3/4"
TH100	1"
TH125	1-1/4"
TH150	1-1/2"
TH200	2"
TH250	2-1/2"
TH300	3"
TH350	3-1/2"
TH400	4"

Grounding Hub

Hub de Puesta a Tierra

Material: Zinc
Standard: UL 514B



CAT#	Trade Size
THG050	1/2"
THG075	3/4"
THG100	1"
THG125	1-1/4"
THG150	1-1/2"
THG200	2"
THG250	2-1/2"
THG300	3"
THG350	3-1/2"
THG400	4"

Conduit Nipple

Niple Cortos

Material: Steel with Zinc Coating



CAT#	Trade Size
NP050	1/2" _29cm
NP075	3/4" _35cm
NP100	1" _38cm
NP125	1-1/4" _41cm
NP150	1-1/2" _45cm
NP200	2" _57cm

All Threaded Nipple

Hilo Completo Niples Cortos

Material: Steel with Zinc Coating



CAT#	Trade Size
NPT050	1/2"
NPT075	3/4"
NPT100	1"
NPT125	1-1/4"
NPT150	1-1/2"
NPT200	2"

Liquid Tight Flexible Conduit

Flexible Metalico Conduit Pesado Forrado En PVC

Material: Galvanized Steel Strip, Heavy Duty PVC Jacket
Colour: Black / Grey



CAT#	Trade Size	Inside Dia.(mm)		Outside Dia.(mm)		Bending Radius(mm)
		Min	Max	Min	Max	Min
LFC038	3/8"	12.30	12.80	17.50	18.00	55
LFC050	1/2"	15.80	16.30	20.80	21.30	85
LFC075	3/4"	20.70	21.20	26.30	26.70	105
LFC100	1"	26.00	26.60	32.70	33.40	165
LFC125	1-1/4"	34.70	35.40	41.40	42.20	200
LFC150	1-1/2"	40.00	40.60	47.40	48.30	220
LFC200	2"	51.30	51.90	59.40	60.30	280
LFC250	2-1/2"	63.00	63.60	72.10	73.00	370
LFC300	3"	78.00	78.70	87.90	88.90	450
LFC400	4"	101.60	102.60	113.20	114.30	600

Liquid Tight Connector Straight

Conector Recto

Material: Zinc
Standard: UL 514B



CAT#	Trade Size
47038	3/8"
47050	1/2"
47075	3/4"
47100	1"
47125	1-1/4"
47150	1-1/2"
47200	2"
47250	2-1/2"
47300	3"
47400	4"

Liquid Tight Connector 90°

Conector Curvo

Material: Zinc
Standard: UL 514B



CAT#	Trade Size
49038	3/8"
49050	1/2"
49075	3/4"
49100	1"
49125	1-1/4"
49150	1-1/2"
49200	2"
49250	2-1/2"
49300	3"
49400	4"

Liquid Tight Connector Straight

Conector Recto

Material: Malleable Iron



CAT#	Trade Size
47M038	3/8"
47M050	1/2"
47M075	3/4"
47M100	1"
47M125	1-1/4"
47M150	1-1/2"
47M200	2"

Liquid Tight Connector 45°

Conector Curvo 45°

Material: Malleable Iron



CAT#	Trade Size
48M038	3/8"
48M050	1/2"
48M075	3/4"
48M100	1"
48M125	1-1/4"
48M150	1-1/2"
48M200	2"

Liquid Tight Connector 90°

Conector Curvo 90°

Material: Malleable Iron



CAT#	Trade Size
49M038	3/8"
49M050	1/2"
49M075	3/4"
49M100	1"
49M125	1-1/4"
49M150	1-1/2"
49M200	2"

Grounding Liquid Tight Connector Straight

Conector Recto Con Aislacion A Tierra

Material: Malleable Iron



CAT#	Trade Size
47MG038	3/8"
47MG050	1/2"
47MG075	3/4"
47MG100	1"
47MG125	1-1/4"
47MG150	1-1/2"
47MG200	2"

Grounding Liquid Tight Connector 45°

Conector Curvo 45° Con Aislacion A Tierra

Material: Malleable Iron



CAT#	Trade Size
48MG038	3/8"
48MG050	1/2"
48MG075	3/4"
48MG100	1"
48MG125	1-1/4"
48MG150	1-1/2"
48MG200	2"

Grounding Liquid Tight Connector 90°

Conector Curvo 90° Con Aislacion A Tierra

Material: Malleable Iron



CAT#	Trade Size
49MG038	3/8"
49MG050	1/2"
49MG075	3/4"
49MG100	1"
49MG125	1-1/4"
49MG150	1-1/2"
49MG200	2"

PVC Coated Steel Flexible Conduit

Flexible Metalico Conduit Cubierta PVC

Material: Galvanized Steel Strip, Vacuum PVC Jacket
Colour: Black / Grey



Flexible Conduit Coupling 2 Way

Uniones Para Flexible Metalico Con PVC

Material / Finish: Zinc / Electro-Plated
Hexagonal Type, Bright



CAT#	Trade Size
44050	1/2"
44075	3/4"
44100	1"
44125	1-1/4"
44150	1-1/2"
44200	2"

Flexible Conduit Straight Connector

Conector Recto Para Flexible Metalico Con PVC

Material: Zinc
Flex to Box
Plum Type, Matte



CAT#	Trade Size
41P038	3/8"
41P050	1/2"
41P075	3/4"
41P100	1"
41P125	1-1/4"
41P150	1-1/2"
41P200	2"
41P250	2-1/2"
41P300	3"
41P400	4"

Flexible Conduit Straight Connector

Conector Recto Para Flexible Metalico Con PVC

Material / Finish: Zinc / Electro-Plated
Flex to Box
Hexagonal Type, Bright



CAT#	Trade Size
41H038	3/8"
41H050	1/2"
41H075	3/4"
41H100	1"
41H125	1-1/4"
41H150	1-1/2"
41H200	2"
41H250	2-1/2"
41H300	3"
41H400	4"

CAT#	Trade Size	Inside Dia.(mm)		Outside Dia.(mm)		Bending Radius(mm)
		Min	Max	Min	Max	
PFC038	3/8"	12.30	12.8	17.00	17.50	35
PFC050	1/2"	15.80	16.30	20.20	20.70	65
PFC075	3/4"	20.70	21.20	25.50	26.10	75
PFC100	1"	26.00	26.60	31.60	32.20	100
PFC125	1-1/4"	34.70	35.40	40.80	41.50	125
PFC150	1-1/2"	40.00	40.60	46.60	47.20	150
PFC200	2"	51.30	51.90	58.10	58.70	175
PFC250	2-1/2"	63.00	63.60	71.80	72.40	200
PFC300	3"	78.00	78.70	87.20	87.90	225
PFC400	4"	101.60	102.60	111.20	112.30	275

Flexible Conduit Coupling

Copla Recto Con Tornillo Para Conducto Flexible

Material: Zinc
EMT to Flex
Plum Type, Matte



CAT#	Trade Size
42P038	3/8"
42P050	1/2"
42P075	3/4"
42P100	1"
42P125	1-1/4"
42P150	1-1/2"
42P200	2"
42P250	2-1/2"
42P300	3"
42P400	4"

Flexible Conduit Coupling

Copla Recto Con Roscado Para Conducto Flexible

Material: Zinc
Rigid to Flex
Plum Type, Matte



CAT#	Trade Size
43P038	3/8"
43P050	1/2"
43P075	3/4"
43P100	1"
43P125	1-1/4"
43P150	1-1/2"
43P200	2"
43P250	2-1/2"
43P300	3"
43P400	4"

Flexible Conduit Connector 90°

Conector Curvo 90° Para Flexible Metalico Con PVC

Material: Zinc
Flex to Box
Plum Type, Matte



CAT#	Trade Size
40P038	3/8"
40P050	1/2"
40P075	3/4"
40P100	1"
40P125	1-1/4"
40P150	1-1/2"
40P200	2"
40P250	2-1/2"
40P300	3"
40P400	4"

Flexible Conduit Connector 90°

Conector Curvo 90° Para Flexible Metalico Con PVC

Material / Finish: Zinc / Electro-Plated
Flex to Box
Hexagonal Type, Bright



CAT#	Trade Size
40H038	3/8"
40H050	1/2"
40H075	3/4"
40H100	1"
40H125	1-1/4"
40H150	1-1/2"
40H200	2"
40H250	2-1/2"
40H300	3"
40H400	4"

Flexible Conduit Coupling

Copla Recto Con Tornillo Para Conducto Flexible

Material / Finish: Zinc / Electro-Plated
Flex to Box
Hexagonal Type, Bright



CAT#	Trade Size
42H038	3/8"
42H050	1/2"
42H075	3/4"
42H100	1"
42H125	1-1/4"
42H150	1-1/2"
42H200	2"
42H250	2-1/2"
42H300	3"
42H400	4"

Flexible Conduit Coupling

Copla Recto Con Roscado Para Conducto Flexible

Material / Finish: Zinc / Electro-Plated
Rigid to Box
Hexagonal Type, Bright



CAT#	Trade Size
43H038	3/8"
43H050	1/2"
43H075	3/4"
43H100	1"
43H125	1-1/4"
43H150	1-1/2"
43H200	2"
43H250	2-1/2"
43H300	3"
43H400	4"

Galvanized Steel Flexible Conduit American Type

Flexible Metalico Conduit Tipo Americano

Material: Galvanized Steel Strip
Colour: Natural Operating



CAT#	Trade Size	Inside Dia.(mm)		Outside Dia.(mm)		Bending Radius(mm)
		Min	Max	Min	Max	Min
GFA038	3/8"	9.52	9.96	14.22	15.49	50
GFA050	1/2"	15.88	16.38	21.84	23.37	75
GFA075	3/4"	20.62	21.21	26.54	28.07	100
GFA100	1"	25.4	26.42	33.02	35.05	125
GFA125	1-1/4"	31.75	33.02	39.37	41.40	160
GFA150	1-1/2"	38.10	40.01	46.99	49.53	190
GFA200	2"	50.80	52.83	59.69	62.23	255

Galvanized Steel Flexible Conduit

Flexible Conduit De Acero Glvanzado

Material: Galvanized Steel Strip
Colour: Natural Operating



CAT#	Trade Size	Inside Dia.(mm)		Outside Dia.(mm)		Bending Radius(mm)
		Min	Max	Min	Max	Min
GFC038	3/8"	12.30	12.8	15.7	16.20	50
GFC050	1/2"	15.80	16.30	19.20	19.70	65
GFC075	3/4"	20.70	21.20	24.50	25.10	75
GFC100	1"	26.00	26.60	30.40	31.00	100
GFC125	1-1/4"	34.70	35.40	39.60	40.30	125
GFC150	1-1/2"	40.00	40.60	45.20	45.80	150
GFC200	2"	51.30	51.90	56.50	57.10	175
GFC250	2-1/2"	63.00	63.60	70.20	70.80	200
GFC300	3"	78.00	78.70	85.20	85.90	225
GFC400	4"	101.60	102.60	108.50	109.50	275

BX-Flex Squeeze Connector Straight

Conector Recto De Apriete

Material: Zinc
Standard: UL 514B



CAT#	Trade Size
S1038	3/8"
S1050	1/2"
S1075	3/4"
S1100	1"
S1125	1-1/4"
S1150	1-1/2"
S1200	2"
S1250	2-1/2"
S1300	3"
S1400	4"

BX-Flex Squeeze Connector 90°

Conector Curvos De Apriete

Material: Zinc
Standard: UL 514B



CAT#	Trade Size
A1038	3/8"
A1050	1/2"
A1075	3/4"
A1100	1"
A1125	1-1/4"
A1150	1-1/2"
A1200	2"
A1250	2-1/2"
A1300	3"
A1400	4"

Clamp Connector

For NM & SE Cable
Standard: UL 514B

CAT#	Trade Size
RC050	1/2"
RC075	3/4"
RC100	1"



EMT to Flex Coupling

Copla EMT A Flexible
Material: Zinc

CAT#	Trade Size
EF050	1/2"
EF075	3/4"
EF050	1"



Interior Flex Connector

Conector Flexible A Caja
Material: Zinc or Aluminum

CAT#	Trade Size
IFC038	3/8"
IFC050	1/2"
IFC075	3/4"
IFC100	1"



Duplex Connector & BX-Flex, NM & MC Cable Connector

Material: Zinc



HU1001



HU1002



HU1003



HU1004



HU1005

CAT#	Trade Size	K.O. Size
HU1001	3/8"	1/2"
HU1002	3/8"	1/2"
HU1003	3/8"	1/2"
HU1004	3/8"	1/2"
HU1005	3/8"	1/2"

Liquid Tight Flexible Non-Metallic Conduit

Conducto Flexible De PVC No-Metalico

Material: Thermoplastic Polyvinyl Chloride (PVC)

Colour: Grey



CAT#	Trade Size Inch	Inside Dia.(mm)		Outside Dia.(mm)		Bending Radius (mm)
		Min	Max	Min	Max	
LFPC038	3/8"	12.29	12.80	17.53	18.03	51
LFPC050	1/2"	15.80	16.30	20.83	21.34	72.5
LFPC075	3/4"	20.83	21.34	26.16	26.67	108
LFPC100	1"	26.44	27.08	32.77	33.40	165

PVC Flexible Corrugated Conduit

Conducto Corrugado Flexible De PVC No-Metalico

Material: Thermoplastic Polyvinyl Chloride (PVC)

Colour: Black



CAT#	Trade Size Inch	Inside Dia.(mm)		Outside Dia.(mm)		Bending Radius (mm)
		Min	Max	Min	Max	
LFCC038	3/8"	12.29	12.80	17.53	18.03	51
LFCC050	1/2"	15.80	16.30	20.83	21.34	72.5
LFCC075	3/4"	20.83	21.34	26.16	26.67	108
LFCC100	1"	26.44	27.08	32.77	33.40	165

LT Flexible Conduit Straight Connector Non-Metallic

Conector Recto No-Metallico

Material: PVC

Colour: Grey



CAT#	Trade Size
46P038	3/8"
46P050	1/2"
46P075	3/4"
46P100	1"
46P125	1-1/4"
46P150	1-1/2"
46P200	2"

LT Flexible Conduit 90° Connector Non-Metallic

Conector Curvo No-Metallico

Material: PVC

Colour: Grey



CAT#	Trade Size
48P038	3/8"
48P050	1/2"
48P075	3/4"
48P100	1"
48P125	1-1/4"
48P150	1-1/2"
48P200	2"

LT Flexible Conduit Straight Connector Quick Type Non-Metallic

Conector Recto No-Metallico

Material: PVC

Colour: Grey



CAT#	Trade Size
47P038	3/8"
47P050	1/2"
47P075	3/4"
47P100	1"
47P125	1-1/4"
47P150	1-1/2"
47P200	2"

LT Flexible Conduit 90° Connector Quick Type Non-Metallic

Conector Curvo No-Metallico

Material: PVC

Colour: Grey

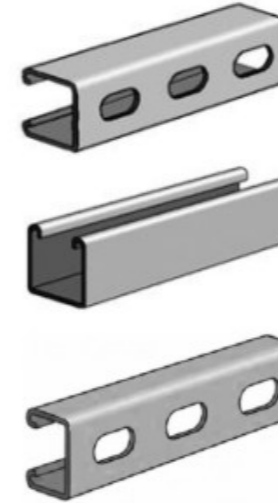


CAT#	Trade Size
49P038	3/8"
49P050	1/2"
49P075	3/4"
49P100	1"
49P125	1-1/4"
49P150	1-1/2"
49P200	2"

Fixing, Holding and Support

Fijación, Sujeción y Soporte

Strut Channel



CAT#		Width	Height	Thickness	Galvanizing
Slotted	Plain				
SPS4115	PPS4115	41mm	41mm	1.5mm	Pre-Gal.
SPS4120	PPS4120	41mm	41mm	2.0mm	Pre-Gal.
SPS4125	PPS4125	41mm	41mm	2.5mm	Pre-Gal.
SPS2115	PPS2115	41mm	21mm	1.5mm	Pre-Gal.
SPS2120	PPS2120	41mm	21mm	2.0mm	Pre-Gal.
SPS2125	PPS2125	41mm	21mm	2.5mm	Pre-Gal.
SHS4115	PHS4115	41mm	41mm	1.5mm	H.D.G.
SHS4120	PHS4120	41mm	41mm	2.0mm	H.D.G.
SHS4125	PHS4125	41mm	41mm	2.5mm	H.D.G.
SHS2115	PHS2115	41mm	21mm	1.5mm	H.D.G.
SHS2120	PHS2120	41mm	21mm	2.0mm	H.D.G.
SHS2125	PHS2125	41mm	21mm	2.5mm	H.D.G.

Threaded Rod



CAT#		Size	Diameter (mm)		Pitch (mm)
Galvanized	Blackened		Min	Max	
GM5	BM5	M5	4.84	4.97	0.8
GM6	BM6	M6	5.8	5.96	1
GM8	BM8	M8	7.77	7.96	1.25
GM10	BM10	M10	9.74	9.96	1.5
GM12	BM12	M12	11.71	11.95	1.75
GM14	BM14	M14	13.7	13.94	2
GM16	BM16	M16	15.7	15.94	2
GM18	BM18	M18	17.64	17.93	2.5
GM20	BM20	M20	19.64	19.93	2.5
GM22	BM22	M22	21.64	21.93	2.5



CAT#		Size	Diameter (mm)		Pitch (mm)
Galvanized	Blackened		Min	Max	
G0316	B0316	3/16"	4.62	4.8	24
G0104	B0104	1/4"	6.12	6.32	20
G0516	B0516	5/16"	7.69	7.91	18
G0308	B0308	3/8"	9.25	9.39	16
G0716	B0716	7/16"	10.82	11.08	14
G0102	B0102	1/2"	12.39	12.66	13
G0508	B0508	5/8"	15.53	15.83	11
G0304	B0304	3/4"	18.68	19.00	10
G0708	B0708	7/8"	21.82	22.18	9
G1000	B1000	1"	24.97	25.35	8

Strut Clamp with Carriage Bolt



CAT#	Size	CAT#
IMC		EMT
20050	1/2"	21050
20075	3/4"	21075
20100	1"	21100
20125	1-1/4"	21125
20150	1-1/2"	21150
20200	2"	21200
20250	2-1/2"	21250
20300	3"	21300
20350	3-1/2"	21350
20400	4"	21400

Pipe Clamp with Rubber Profile



CAT#	Size	Pipe O.D. Range
25050	1/2"	20-25mm
25075	3/4"	26-30mm
25100	1"	32-36mm
25125	1-1/4"	38-43mm
25150	1-1/2"	47-51mm
25200	2"	53-58mm
25250	2-1/2"	68-72mm
25300	3"	75-80mm
25400	4"	113-118mm
25500	5"	148-152mm
25600	6"	159-166mm

Pipe Clamp



CAT#	Size	Pipe O.D.(mm)
30075	3/4"	26.7
30100	1"	33.4
30125	1-1/4"	42.2
30150	1-1/2"	48.3
30200	2"	60.3
30250	2-1/2"	73
30300	3"	88.9
30350	3-1/2"	101.6
30400	4"	114.3
30500	5"	141.3
30600	6"	168.3

Riser Clamp



CAT#	Size	Pipe O.D.(mm)
27075	3/4"	26.7
27100	1"	33.4
27125	1-1/4"	42.2
27150	1-1/2"	48.3
27200	2"	60.3
27250	2-1/2"	73
27300	3"	88.9
27400	3-1/2"	101.6
27400	4"	114.3
27400	5"	141.3
27400	6"	168.3

Swivel Loop Hanger - Colgadores pera



CAT#	Size	Pipe O.D.(mm)
23050	1/2"	21.3
23075	3/4"	26.7
23100	1"	33.4
23125	1-1/4"	42.2
23150	1-1/2"	48.3
23200	2"	60.3
23250	2-1/2"	73
23300	3"	88.9
23350	3-1/2"	101.6
23400	4"	114.3
23500	5"	141.3
23600	6"	168.3

Clevis Hanger - Colgadores clevis



CAT#	Size	Pipe O.D.(mm)
24050	1/2"	21.3
24075	3/4"	26.7
24100	1"	33.4
24125	1-1/4"	42.2
24150	1-1/2"	48.3
24200	2"	60.3
24250	2-1/2"	73
24300	3"	88.9
24350	3-1/2"	101.6
24400	4"	114.3
24500	5"	141.3
24600	6"	168.3

NM Cable Clip



CAT#	Size
NMC516	5/16"

Steel Beam Clamp



CAT#	Size
28104	1/4"
28308	3/8"

NM Cable Clip with Bracket



CAT#	Size
NMCB516	5/16"

Malleable Iron Beam Clamp



CAT#	Size
29006	M6
29008	M8
29010	M10
29012	M12
29104	1/4"
29308	3/8"
29102	1/2"

U-Bolt with Nuts



CAT#	Size	Pipe O.D.(mm)	Bolt Size
26050	1/2"	21.3	M6
26075	3/4"	26.7	M6/M8
26100	1"	33.4	M6/M8/M10
26125	1-1/4"	42.2	M6/M8/M10
26150	1-1/2"	48.3	M6/M8/M10
26200	2"	60.3	M6/M8/M10/M12
26250	2-1/2"	73.0	M6/M8/M10/M12
26300	3"	88.9	M6/M8/M10/M12
26350	3-1/2"	101.6	M6/M8/M10/M12
26400	4"	114.3	M6/M8/M10/M12

Conduit Hanger



CAT#	Size
22050	1/2"
22075	3/4"
22100	1"
22125	1-1/4"
22150	1-1/2"
22200	2"
22250	2-1/2"
22300	3"
22350	3-1/2"
22400	4"

Channel Nut



CAT#	Size
CN014	1/4"
CN516	5/16"
CN038	3/8"
CN716	7/16"
CN050	1/2"

Channel Nut With Spring



CAT#	Size
SN014	1/4"
SN516	5/16"
SN038	3/8"
SN716	7/16"
SN050	1/2"

Drop-In Anchor



CAT#	Size
DA06	M6
DA08	M8
DA10	M10
DA12	M12
DA14	M14
DA0104	1/4"
DA0516	5/16"
DA0308	3/8"
DA0102	1/2"

Hex Coupling Nuts



CAT#	Size
HCN06	M6
HCN08	M8
HCN10	M10
HCN12	M12
HCN14	M14
HCN0104	1/4"
HCN0516	5/16"
HCN0308	3/8"
HCN0102	1/2"

Stand Off Strap



CAT#	Size	Pipe O.D.(mm)
105075	3/4"	26.7
105100	1"	33.4
105125	1-1/4"	42.2
105150	1-1/2"	48.3
105200	2"	60.3

Wrap Around Strap



CAT#	Size	Pipe O.D.(mm)
107075	3/4"	26.7
107100	1"	33.4
107125	1-1/4"	42.2
107150	1-1/2"	48.3
107200	2"	60.3

Side Mount Strap



CAT#	Size	Pipe O.D.(mm)
109075	3/4"	26.7
109100	1"	33.4
109125	1-1/4"	42.2
109150	1-1/2"	48.3
109200	2"	60.3



Adjustable Hinge

CAT#	Size
31002	2 Holes
31003	3 Holes
31004	4 Holes

Nail Strap



CAT#	Size
NS050	1/2"
NS075	3/4"
NS100	1"

Weatherproof Junction Box & Cover

Features

- Aluminum Die Casted
- Electrostatic Spray Powder Coated
- C/W Closure Plugs and Mounting Lugs

One Gang Box

2" Deep
4-9/16" L x 2-1/16" W



CAT#	Outlet Holes	Hole Size	Cu.Inch
SG503	3	1/2"	18.3
SG753	3	3/4"	18.3
SG504	4	1/2"	18.3
SG754	4	3/4"	18.3
SG505	5	1/2"	18.3
SG755	5	3/4"	18.3

One Gang Box

2-5/8" Deep
4-9/16" L x 2-1/16" W



CAT#	Outlet Holes	Hole Size	Cu.Inch
SGD503	3	1/2"	23.8
SGD753	3	3/4"	23.8
SGD504	4	1/2"	23.8
SGD754	4	3/4"	23.8
SGD505	5	1/2"	23.8
SGD755	5	3/4"	23.8

Two Gang Box

2" Deep
4-9/16" L x 4-9/16" W

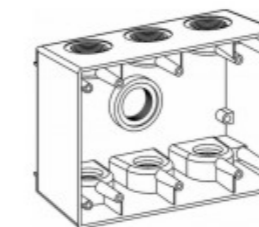


CAT#	Outlet Holes	Hole Size	Cu.Inch
DG503	3	1/2"	30.5
DG753	3	3/4"	30.5
DG504	4	1/2"	30.5
DG754	4	3/4"	30.5
DG505	5	1/2"	30.5
DG755	5	3/4"	30.5
DG505X	5	1/2"	30.5
DG755X	5	3/4"	30.5
DG507	7	1/2"	30.5
DG757	7	3/4"	30.5



Three Gang Box

2-5/8" Deep
6-3/8" L x 4-1/2" W



CAT#	Outlet Holes	Hole Size	Cu.Inch
TG507	7	1/2"	54
TG507	7	3/4"	54
TG007	7	1"	54

Round Box

1-5/8" Deep
4" Dia.



CAT#	Outlet Holes	Hole Size	Cu.Inch
RB505	5	1/2"	15.8
RB755	5	3/4"	15.8

Blank Cover

Aluminum / Steel Stamping
C/W Screws and Gasket

CAT#	Material
1BC	Aluminum Sheet
2BC	Aluminum Sheet
3BC	Aluminum Sheet
RBC	Aluminum Sheet

CAT#	Material
1BCS	Powder Coated Steel
2BCS	Powder Coated Steel
3BCS	Powder Coated Steel
RBCS	Powder Coated Steel

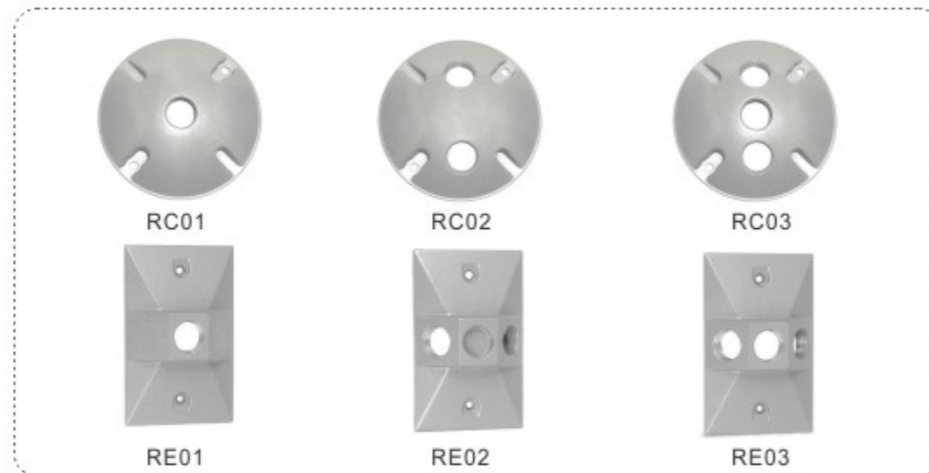


Covers with Knockouts

Aluminum Die Casted
C/W Screws and Gasket

CAT#	Shape	Outlet Holes
RC01	Round	1x1/2"
RC02	Round	2x1/2"
RC03	Round	3x1/2"

CAT#	Shape	Outlet Holes
RE01	Rectangle	1x1/2"
RE02	Rectangle	2x1/2"
RE03	Rectangle	3x1/2"



Flip Covers for Devices

Aluminum Die Casted
C/W Screws and Gasket

CAT#	Mount	Device
1CGV	Vertical	1 GFCI
2CGV	Vertical	2 GFCI
1CGH	Horizontal	1 GFCI
1CDH	Horizontal	1 Duplex



Lamp Holder

CAT#: LH150
PAR38 150W
Aluminum Die Casted
C/W Rubber Throat Ring
Color: Grey / Green



Lamp Holder Kit

CAT#: LHK150
PAR38 150W
Aluminum Die Casted
C/W Rubber Throat Ring
Color: Grey / Green



Conduit Body

Features

- Aluminum Die Casted
- Electrostatic Spray Powder Coated
- C/W Aluminum Cover and Gasket

Rigid / IMC Threaded Type



CAT#	Trade Size	Dimension (mm)		
		Length	Width	Height
LL050	1/2"	110	52	35
LL075	3/4"	129	59	41
LL100	1"	150	68	48
LL125	1-1/4"	198	89	64
LL150	1-1/2"	198	89	64
LL200	2"	256	109	86

EMT Set Screw Type



CAT#	Trade Size
ELL050	1/2"
ELL075	3/4"
ELL100	1"
ELL125	1-1/4"
ELL150	1-1/2"
ELL200	2"

Rigid / IMC Threaded Type



CAT#	Trade Size	Dimension (mm)		
		Length	Width	Height
LR050	1/2"	110	52	35
LR075	3/4"	129	59	41
LR100	1"	150	68	48
LR125	1-1/4"	198	89	64
LR150	1-1/2"	198	89	64
LR200	2"	256	109	86

EMT Set Screw Type



CAT#	Trade Size
ELR050	1/2"
ELR075	3/4"
ELR100	1"
ELR125	1-1/4"
ELR150	1-1/2"
ELR200	2"

Rigid / IMC Threaded Type



CAT#	Trade Size	Dimension (mm)		
		Length	Width	Height
LB050	1/2"	110	34	53
LB075	3/4"	129	40	60
LB100	1"	150	46	70
LB125	1-1/4"	198	64	89
LB150	1-1/2"	198	64	89
LB200	2"	256	81	114

EMT Set Screw Type



CAT#	Trade Size
ELB050	1/2"
ELB075	3/4"
ELB100	1"
ELB125	1-1/4"
ELB150	1-1/2"
ELB200	2"

Rigid / IMC Threaded Type



CAT#	Trade Size	Dimension (mm)		
		Length	Width	Height
LC050	1/2"	119	34	35
LC075	3/4"	140	40	41
LC100	1"	163	46	48
LC125	1-1/4"	213	64	64
LC150	1-1/2"	213	64	64
LC200	2"	268	81	86

EMT Set Screw Type



CAT#	Trade Size
ELC050	1/2"
ELC075	3/4"
ELC100	1"
ELC125	1-1/4"
ELC150	1-1/2"
ELC200	2"

Rigid / IMC Threaded Type



CAT#	Trade Size	Dimension (mm)		
		Length	Width	Height
LT050	1/2"	119	52	35
LT075	3/4"	140	59	41
LT100	1"	163	68	48
LT125	1-1/4"	213	89	64
LT150	1-1/2"	213	89	64
LT200	2"	268	109	86

EMT Set Screw Type



CAT#	Trade Size
ELT050	1/2"
ELT075	3/4"
ELT100	1"
ELT125	1-1/4"
ELT150	1-1/2"
ELT200	2"

Handy Box



CAT#	Size	Depth	Hole Size	Knockouts			Thickness mm
				Sides	Bottom	Ends	
HB50112	4"x2"	1-1/2"	1/2"	6x1/2"	3x1/2"	2x1/2"	0.8~1.6
HB75112	4"x2"	1-1/2"	3/4"	2x1/2"&2x3/4"	2x3/4"	2x3/4"	0.8~1.6
HBM112	4"x2"	1-1/2"	1/2"&3/4"	4x1/2"&2x3/4"	2x1/2"&1x3/4"	2x1/2"	0.8~1.6
HB50178	4"x2"	1-7/8"	1/2"	6x1/2"	3x1/2"	2x1/2"	0.8~1.6
HB75178	4"x2"	1-7/8"	3/4"	4x3/4"	2x3/4"	2x3/4"	0.8~1.6
HBM178	4"x2"	1-7/8"	1/2"&3/4"	4x1/2"&2x3/4"	2x1/2"&1x3/4"	2x3/4"	0.8~1.6
HB50218	4"x2"	2-1/8"	1/2"	6x1/2"	3x1/2"	2x1/2"	1.0~1.6
HB75218	4"x2"	2-1/8"	3/4"	4x3/4"	2x3/4"	2x3/4"	1.0~1.6
HBM218	4"x2"	2-1/8"	1/2"&3/4"	4x1/2"&2x3/4"	2x1/2"&1x3/4"	2x3/4"	1.0~1.6

Handy Box with Raised Ground Screw



CAT#	Size	Depth	Hole Size	Knockouts			Thickness mm
				Sides	Bottom	Ends	
HBG50178	4"x2"	1-7/8"	1/2"	6x1/2"	2x1/2"	2x1/2"	1.0~1.6
HBG75178	4"x2"	1-7/8"	3/4"	4x3/4"	2x1/2"	2x3/4"	1.0~1.6
HBGM178	4"x2"	1-7/8"	1/2"&3/4"	4x1/2"&2x3/4"	2x1/2"	2x3/4"	1.0~1.6
HBG50218	4"x2"	2-1/8"	1/2"	6x1/2"	2x1/2"	2x1/2"	1.0~1.6
HBG75218	4"x2"	2-1/8"	3/4"	4x3/4"	2x1/2"	2x3/4"	1.0~1.6
HBGM218	4"x2"	2-1/8"	1/2"&3/4"	4x1/2"&2x3/4"	2x1/2"	2x3/4"	1.0~1.6

Handy Box With Combination Knockouts



CAT#	Size	Depth	Hole Size	Knockouts			Thickness mm
				Sides	Bottom	Ends	
HBC1781	4"x2"	1-7/8"	1/2"&3/4"	4xCOM	1xCOM	2xCOM	0.8~1.6
HBC1782	4"x2"	1-7/8"	1/2"&3/4"	4xCOM	2xCOM	2xCOM	0.8~1.6
HBC218	4"x2"	2-1/8"	1/2"&3/4"	4xCOM	2x3/4"	2xCOM	1.0~1.6

Handy Box Extension Ring



CAT#	Size	Depth	Hole Size	Knockouts			Thickness mm
				Sides	Bottom	Ends	
HBE50178	4"x2"	1-7/8"	1/2"	6x1/2"	-	2x1/2"	0.8~1.6
HBE75178	4"x2"	1-7/8"	3/4"	4x3/4"	-	2x3/4"	0.8~1.6
HBEM178	4"x2"	1-7/8"	1/2"&3/4"	4x1/2"&2x3/4"	-	2x3/4"	0.8~1.6

Octagon Box



CAT#	Size	Depth	Hole Size	Knockouts		Thickness mm
				Sides	Bottom	
OB50112	4"x4"	1-1/2"	1/2"	4x1/2"	3x1/2"&2x3/4"	0.8~1.6
OB75112	4"x4"	1-1/2"	3/4"	4x3/4"	3x1/2"&2x3/4"	0.8~1.6
OBM112	4"x4"	1-1/2"	1/2"&3/4"	2x1/2"&2x3/4"	3x1/2"&2x3/4"	0.8~1.6
OB50178	4"x4"	1-7/8"	1/2"	4x1/2"	3x1/2"&2x3/4"	0.8~1.6
OB75178	4"x4"	1-7/8"	3/4"	4x3/4"	3x1/2"&2x3/4"	0.8~1.6
OBM178	4"x4"	1-7/8"	1/2"&3/4"	2x1/2"&2x3/4"	3x1/2"&2x3/4"	0.8~1.6
OB50218	4"x4"	2-1/8"	1/2"	4x1/2"	3x1/2"&2x3/4"	1.0~1.6
OB75218	4"x4"	2-1/8"	3/4"	4x3/4"	3x1/2"&2x3/4"	1.0~1.6
OBM218	4"x4"	2-1/8"	1/2"&3/4"	2x1/2"&2x3/4"	3x1/2"&2x3/4"	1.0~1.6

Octagon Steel Box With Raised Ground Screw



CAT#	Size	Depth	Hole Size	Knockouts		Thickness mm
				Sides	Bottom	
OBG50112	4"x4"	1-1/2"	1/2"	4x1/2"	4x1/2"	1.0~1.6
OBGM218	4"x4"	2-1/8"	1/2"&3/4"	2x1/2"&2x3/4"	2x1/2"&2x3/4"	1.0~1.6
OBGM112	4"x4"	1-1/2"	1/2"&3/4"	4xCOM	2x1/2"&2xCOM	1.0~1.6

Octagon Steel Box With Combination Knockouts



CAT#	Size	Depth	Hole Size	Knockouts		Thickness mm
				Sides	Bottom	
OBC1121	4"x4"	1-1/2"	1/2"&3/4"	4xCOM	3x1/2"&2x3/4"	0.8~1.6
OBC1122	4"x4"	1-1/2"	1/2"&3/4"	4xCOM	1x1/2"&4xCOM	0.8~1.6
OBC2181	4"x4"	2-1/8"	1/2"&3/4"	4xCOM	3x1/2"&2x3/4"	1.0~1.6
OBC2182	4"x4"	2-1/8"	1/2"&3/4"	4xCOM	1x1/2"&4xCOM	1.0~1.6

Octagon Steel Box Extension Ring



CAT#	Size	Depth	Hole Size	Knockouts		Thickness mm
				Sides	Bottom	
OBE50112	4"x4"	1-1/2"	1/2"	4x1/2"	-	0.8~1.6
OBE75112	4"x4"	1-1/2"	3/4"	4x3/4"	-	0.8~1.6
OBEM112	4"x4"	1-1/2"	1/2"&3/4"	2x1/2"&2x3/4"	-	0.8~1.6

Square Box



CAT#	Size	Depth	Hole Size	Knockouts		Thickness mm
				Sides	Bottom	
SB50112	4"x4"	1-1/2"	1/2"	12x1/2"	3x1/2"&2x3/4"	0.8~1.6
SB75112	4"x4"	1-1/2"	3/4"	8x3/4"	3x1/2"&2x3/4"	0.8~1.6
SBM112	4"x4"	1-1/2"	1/2"&3/4"	8x1/2"&4x3/4"	3x1/2"&2x3/4"	0.8~1.6
SB50178	4"x4"	1-7/8"	1/2"	12x1/2"	3x1/2"&2x3/4"	0.8~1.6
SB75178	4"x4"	1-7/8"	3/4"	8x3/4"	3x1/2"&2x3/4"	0.8~1.6
SBM178	4"x4"	1-7/8"	1/2"&3/4"	8x1/2"&4x3/4"	3x1/2"&2x3/4"	0.8~1.6
SB50218	4"x4"	2-1/8"	1/2"	12x1/2"	3x1/2"&2x3/4"	1.0~1.6
SB75218	4"x4"	2-1/8"	3/4"	8x3/4"	3x1/2"&2x3/4"	1.0~1.6
SBM218	4"x4"	2-1/8"	1/2"&3/4"	8x1/2"&4x3/4"	3x1/2"&2x3/4"	1.0~1.6

Square Steel Box With Raised Ground Screw



CAT#	Size	Depth	Hole Size	Knockouts		Thickness mm
				Sides	Bottom	
SBG50112	4"x4"	1-1/2"	1/2"	12x1/2"	2x1/2"&2x3/4"	0.8~1.6
SBG75112	4"x4"	1-1/2"	3/4"	8x3/4"	2x1/2"&2x3/4"	0.8~1.6
SBGM112	4"x4"	1-1/2"	1/2"&3/4"	8x1/2"&4x3/4"	2x1/2"&2x3/4"	0.8~1.6
SBG50218	4"x4"	2-1/8"	1/2"	12x1/2"	2x1/2"&2x3/4"	1.0~1.6
SBG75218	4"x4"	2-1/8"	3/4"	8x3/4"	2x1/2"&2x3/4"	1.0~1.6
SBGM218	4"x4"	2-1/8"	1/2"&3/4"	8x1/2"&4x3/4"	2x1/2"&2x3/4"	1.0~1.6
SBGC218	4"x4"	2-1/8"	1/2"&3/4"	8xCOM	2x1/2"&2x3/4"	1.0~1.6

Square Steel Box With Combination Knockouts



CAT#	Size	Depth	Hole Size	Knockouts		Thickness mm
				Sides	Bottom	
SBC2181	4"x4"	2-1/8"	1/2"&3/4"	8xCOM	3x1/2"&2x3/4"	0.8~1.6
SBC2182	4"x4"	2-1/8"	1/2"&3/4"	8xCOM	1x1/2"&4xCOM	0.8~1.6

Square Steel Box Extension Ring



CAT#	Size	Depth	Hole Size	Knockouts		Thickness mm
				Sides	Bottom	
SBE50112	4"x4"	1-1/2"	1/2"	12x1/2"	-	0.8~1.6
SBE75112	4"x4"	1-1/2"	3/4"	8x3/4"	-	0.8~1.6
SBEM50112	4"x4"	1-1/2"	1/2"&3/4"	8x1/2"&4x3/4"	-	0.8~1.6
SBE75218	4"x4"	2-1/8"	3/4"	8x1/2"	-	1.0~1.6
SBEM218	4"x4"	2-1/8"	1/2"&3/4"	8x1/2"&4x3/4"	-	1.0~1.6
SBEC218	4"x4"	2-1/8"	1/2"&3/4"	8xCOM	-	1.0~1.6



HC01



HC02



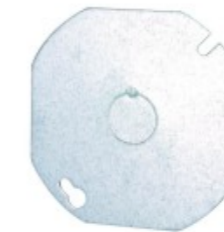
HC03



HC04



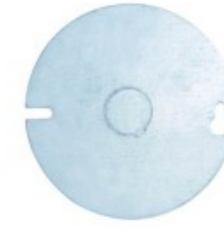
OC01



OC02



OC03



OC04



SC01



SC02



SC03



SC04

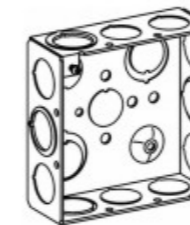


SC05



SC06

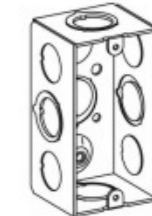
Welded Square Box with MKO



CAT#: WSB1121
4"x4"x1-1/2"
KO Sides: 8x1/2" & 4xMKO
KO Bottom: 2x1/2" & 2xMKO
Raised Ground Emboss



Welded Handy Box with MKO



CAT#: WHB1781
4"x2"x1-7/8"
KO Sides: 4x1/2" & 4xMKO
KO Bottom: 1x1/2" & 1xMKO
Raised Ground Emboss

IEC 61386 Electrical Metallic Tubing (EMT) - Pre-Galvanized
Tubo Rigido Metalico IEC 61386

CAT#	Trade Size	Outside Dia.		Wall Thickness		Length
		Min	Max	(1)	(2)	
RLT20	20mm	19.7mm	20mm	1.2mm	1.0mm	3 Meters
RLT25	25mm	24.6mm	25mm	1.2mm	1.0mm	3 Meters
RLT32	32mm	31.6mm	32mm	1.4mm	1.0mm	3 Meters
RLT40	40mm	39.6mm	40mm	1.4mm	1.2mm	3 Meters
RLT50	50mm	49.6mm	50mm	1.5mm	1.4mm	3 Meters



EMT Elbow 90°
Curva EMT 90°



CAT#	Trade Size
RLTE20	20mm
RLTE25	25mm
RLTE32	32mm
RLTE40	40mm
RLTE50	50mm

Sleeve Type EMT Elbow
Curva EMT tipo Fast Lock



CAT#	Trade Size
RLE20	20mm
RLE25	25mm
RLE32	32mm
RLE40	40mm
RLE50	50mm

EMT Connector Set Screw Type

Conector EMT Con Tornillo
Material: Zinc



CAT#	Trade Size
Z3020	20mm
Z3025	25mm
Z3032	32mm
Z3040	40mm
Z3050	50mm

EMT Coupling Set Screw Type

Copla EMT Con Tornillo
Material: Zinc



CAT#	Trade Size
Z4020	20mm
Z4025	25mm
Z4032	32mm
Z4040	40mm
Z4050	50mm

EMT Connector Set Screw Type

Conector EMT Con Tornillo
Material: Steel with Zinc Coating



CAT#	Trade Size
JDG3020	20mm
JDG3025	25mm
JDG3032	32mm

EMT Coupling Set Screw Type

Copla EMT Con Tornillo
Material: Steel with Zinc Coating



CAT#	Trade Size
JDG4020	20mm
JDG4025	25mm
JDG4032	32mm

EMT Connector Fast Lock Type

EMT Conector tipo Fast Lock
Material: Steel with Zinc Coating



CAT#	Trade Size
RL320	20mm
RL325	25mm
RL332	32mm
RL340	40mm
RL350	50mm

Conduit Strap 1 Hole

Abrazadera de Conducto 1 Agujero
Material: Steel with Zinc Coating



CAT#	Trade Size
BSSS20	20mm
BSSS25	25mm
BSSS32	32mm
BSSS40	40mm
BSSS50	50mm

Strut Clamp RUC Type

Material: Steel with Zinc Coating



CAT#	Trade Size
21020	20mm
21025	25mm
21032	32mm
21040	40mm
21050	50mm

IEC Outlet Box

Material: Steel with Zinc Coating
C/W Cover & Rubber Gasket



CAT#	Specification	
	Pre-Gal.	
SJB01		118*76*40*0.9mm
SJB02		100*65*65*1.0mm
SJB03		100*100*65*1.0mm
SJB04		150*150*100*1.0mm
SJB05		200*100*100*1.0mm
SJB06		200*200*100*1.0mm
SJB07		300*200*100*1.2mm
SJB08		300*200*150*1.2mm
SJB09		400*300*150*1.2mm
SJB10		100*100*50*1.0mm

Hot-dip galvanized is available as required

EMT Coupling Fast Lock Type

EMT Copla tipo Fast Lock
Material: Steel with Zinc Coating



CAT#	Trade Size
RL420	20mm
RL425	25mm
RL432	32mm
RL440	40mm
RL450	50mm

Conduit Strap 2 Holes

Abrazadera de Conducto 2 Agujeros
Material: Steel with Zinc Coating



CAT#	Trade Size
BSSD20	20mm
BSSD25	25mm
BSSD32	32mm
BSSD40	40mm
BSSD50	50mm

Conduit Clip

Material: Manganese Steel



CAT#	Trade Size
CC20	20/25mm
CC32	32mm
CC40	40mm
CC50	50mm

Strut Clamp RC Type

Material: Steel with Zinc Coating



CAT#	Trade Size
31020	20mm
31025	25mm
31032	32mm
31040	40mm
31050	50mm

Conduit Hanger

Material: Steel with Zinc Coating



CAT#	Trade Size
22020	20mm
22025	25mm
22032	32mm
22040	40mm
22050	50mm

Galvanized Steel Flexible Conduit

Flexible Conduit De Acero Galvanizado

Material: Galvanized steel Strip(Square Lock)

Colour: Natural Operating

CAT#	Trade Size	Inside Dia.	Outside Dia.	Bending Radius
		mm	mm	mm
GFC16	16mm	13.0	16.0	35
GFC20	20mm	16.9	20.5	35
GFC25	25mm	21.4	25.0	45
GFC32	32mm	28.1	32.0	50
GFC40	40mm	37.7	42.5	65
GFC50	50mm	48.4	53.0	85
GFC63	63mm	57.5	62.5	90



Liquid Tight Flexible Conduit

Flexible Metalico Conduit Pesado Forrado En PVC

Material: Galvanized Steel Strip (Square Lock), Heavy Duty PVC Jacket

Standard: IEC

Colour: Black, Grey

CAT#	Trade Size	Inside Dia.	Outside Dia.	Bending Radius
		mm	mm	mm
LFC16	16mm	13.0	17.0	100
LFC20	20mm	16.9	21.5	120
LFC25	25mm	21.4	26.0	140
LFC32	32mm	28.1	34.0	180
LFC40	40mm	37.7	44.5	220
LFC50	50mm	48.4	55.0	270
LFC63	63mm	57.5	64.5	310



PVC Coated Steel Flexible Conduit

Flexible Metalico Conduit Cubierta PVC

Material: Galvanized steel Strip(Square Lock), Vacuum PVC Jacket

Standard: IEC

Colour: Black, Grey

CAT#	Trade Size	Inside Dia.	Outside Dia.	Bending Radius
		mm	mm	mm
PFC16	16mm	13	17	70
PFC20	20mm	16.9	21.5	70
PFC25	25mm	21.4	26	70
PFC32	32mm	28.1	34	100
PFC40	40mm	37.7	44.5	120
PFC50	50mm	48.4	55	170
PFC63	63mm	57.5	64.5	200



Flexible Conduit Straight Connector

Conector Recto Para Flexible Metalico Con PVC

Material: Zinc
Flex to Box
Plum Type, Matte



CAT#	Trade Size
M41016	16mm
M41020	20mm
M41025	25mm
M41032	32mm
M41040	40mm
M41050	50mm
M41063	63mm
M41075	75mm
M41090	90mm
M41110	110mm

Material: Zinc
Flex to Box
Hexagonal Type, Bright



CAT#	Trade Size
B41016	16mm
B41020	20mm
B41025	25mm
B41032	32mm
B41040	40mm
B41050	50mm
B41063	63mm
B41075	75mm
B41090	90mm
B41110	110mm

Flexible Conduit Coupling

Copla Recto Con Tornillo Para Conducto Flexible

Material: Zinc
EMT to Flex
Plum Type, Matte



CAT#	Trade Size
M42016	16mm
M42020	20mm
M42025	25mm
M42032	32mm
M42042	40mm
M42050	50mm
M42063	63mm
M42075	75mm
M42090	90mm
M42110	110mm

Material: Zinc
EMT to Flex
Hexagonal Type, Bright



CAT#	Trade Size
B42016	16mm
B42020	20mm
B42025	25mm
B42032	32mm
B42042	40mm
B42050	50mm
B42063	63mm
B42075	75mm
B42090	90mm
B42110	110mm

Flexible Conduit Connector 90°

Conector Curvos 90° Para Flexible Metalico Con PVC

Material: Zinc
Flex to Box
Plum Type, Matte



CAT#	Trade Size
M40016	16mm
M40020	20mm
M40025	25mm
M40032	32mm
M40040	40mm
M40050	50mm
M40063	63mm
M40075	75mm
M40090	90mm
M40110	110mm

Material: Zinc
Flex to Box
Hexagonal Type, Bright



CAT#	Trade Size
B40038	16mm
B40050	20mm
B40075	25mm
B40100	32mm
B40125	40mm
B40150	50mm
B40200	63mm
B40250	75mm
B40300	90mm
B40400	110mm

Flexible Conduit Coupling

Copla Recto Con Roscado Para Conducto Flexible

Material: Zinc
Rigid to Flex
Plum Type, Matte



CAT#	Trade Size
M43016	16mm
M43020	20mm
M43025	25mm
M43032	32mm
M43043	40mm
M43050	50mm
M43063	63mm
M43075	75mm
M43090	90mm
M43110	110mm

Material: Zinc
Rigid to Flex
Hexagonal Type, Bright



CAT#	Trade Size
B43016	16mm
B43020	20mm
B43025	25mm
B43032	32mm
B43043	40mm
B43050	50mm
B43063	63mm
B43075	75mm
B43090	90mm
B43110	110mm

G.I. Conduit



BS4568: PT1 :1970 (Class 4), IEC 61386-1:2008

CAT#	Trade Size	Outside Dia.		Wall Thickness	Length
		Min	Max		
BSP4204	20mm	19.7mm	20mm	1.6±0.15mm	3.75Meters
BSP4254	25mm	24.6mm	25mm	1.6±0.15mm	3.75Meters
BSP4324	32mm	31.6mm	32mm	1.6±0.15mm	3.75Meters
BSP4404	40mm	39.6mm	40mm	1.6±0.15mm	3.75Meters
BSP4504	50mm	49.6mm	50mm	1.8±0.15mm	3.75Meters



BS4568: PT1 :1970 (Class 3), IEC 61386-1:2008

CAT#	Trade Size	Outside Dia.		Wall Thickness	Length
		Min	Max		
BSP4203	20mm	19.6mm	19.9mm	1.4±0.15mm	3.75Meters
BSP4253	25mm	24.4mm	24.9mm	1.4±0.15mm	3.75Meters
BSP4323	32mm	31.5mm	31.8mm	1.4±0.15mm	3.75Meters
BSP4403	40mm	39.4mm	39.7mm	1.4±0.15mm	3.75Meters
BSP4503	50mm	49.4mm	49.7mm	1.6±0.15mm	3.75Meters



BS31: 1940 (Class 3), IEC 61386-1:2008

CAT#	Trade Size	Outside Dia.		Wall Thickness	Length
		Min	Max		
BSP3075	3/4"	18.8mm	19.1mm	1.6±0.1mm	3.75Meters
BSP3100	1"	25.1mm	25.4mm	1.6±0.1mm	3.75Meters
BSP3125	1-1/4"	31.5mm	31.8mm	1.6±0.1mm	3.75Meters

Male Bend 90°



CAT#	Trade Size
OTE20	20mm
OTE25	25mm
OTE32	32mm
OTE38	40mm
OTE50	50mm

Terminal Box 1 Way



CAT#	Size
BSB120	20mm
BSB125	25mm
BSB132	32mm

Through Box 2 Ways



CAT#	Size
BSBT20	20mm
BSBT25	25mm
BSBT32	32mm

Angle Box 2 Ways



CAT#	Size
BSBA20	20mm
BSBA25	25mm
BSBA32	32mm

Tee Box 3 Ways



CAT#	Size
BSB320	20mm
BSB325	25mm
BSB332	32mm

Cross Box 4 Ways



CAT#	Size
BSB420	20mm
BSB425	25mm
BSB432	32mm

Branch-Y Box 3 Ways



CAT#	Size
BSBY20	20mm
BSBY25	25mm
BSBY32	32mm

Twin Through-H Box 4 Ways



CAT#	Size
BSBH20	20mm
BSBH25	25mm
BSBH32	32mm

Branch-U Box 2 Ways



CAT#	Size
BSBU20	20mm
BSBU25	25mm
BSBU32	32mm

Circular Extension Ring



CAT#	Height
BSER16	16mm
BSER20	20mm
BSER25	25mm

Back Outlet Circular Box



CAT#	Size
BOB120	20mm Terminal
BOB125	25mm Terminal
BOBT20	20mm Through
BOBT25	25mm Through
BOBA20	20mm Angle
BOBA25	25mm Angle
BOB320	20mm Tee
BOB325	25mm Tee
BOB420	20mm Cross
BOB425	25mm Cross

20mm Outlet Deeper Box



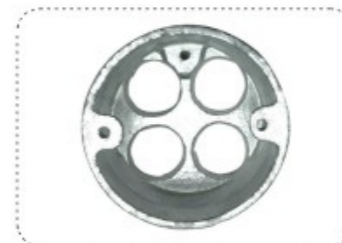
CAT#	Type
BSBD1	Terminal
BSBDT	Through
BSBDA	Angle
BSBD3	Tee
BSBD4	Cross

Tangent Angle Box 2 Ways



CAT#	Size
BSBL20	20mm
BSBL25	25mm

Looping Box



CAT#	Holes
LBSB1	1x20mm
LBSB2	2x20mm
LBSB3	3x20mm
LBSB4	4x20mm

Solid Elbow



CAT#	Size
BSSE20	20mm
BSSE25	25mm
BSSE32	32mm

Inspection Elbow



CAT#	Size
BSIE20	20mm
BSIE25	25mm
BSIE32	32mm

Spacer Bar Saddle



CAT#	Size
BSS20	20mm
BSS25	25mm
BSS32	32mm
BSS40	40mm
BSS50	50mm

BS Conduit Coupling



CAT#	Size
BSC20	20mm
BSC25	25mm
BSC32	32mm
BSC40	40mm
BSC50	50mm

Inspection Bend



CAT#	Size
BSIB20	20mm
BSIB25	25mm
BSIB32	32mm

Inspection Tee



CAT#	Size
BSIT20	20mm
BSIT25	25mm
BSIT32	32mm

Reducer



CAT#	Size
BSR2025	20x25mm
BSR2532	25x32mm
BSR2032	20x32mm

Stopping Plug



CAT#	Size
BSSP20	20mm
BSSP25	25mm
BSSP32	32mm

Distance Saddle



CAT#	Size
BSSD20	20mm
BSSD25	25mm
BSSD32	32mm

Brass Male Bush



CAT#	Size
BMB20	20mm
BMB25	25mm
BMB32	32mm

Circular Box Cover



CAT#	Thickness
BSBC	1.0mm

Hook Cover



CAT#	Size
BSHK	20&25mm

Dome Lid



CAT#	Size
BSDL20	20mm
BSDL25	25mm

Hexagonal Locknut



CAT#	Size
BSL20	20mm
BSL25	25mm
BSL32	32mm
BSL40	40mm
BSL50	50mm



GI Box

Material: Pre-Galvanized Steel
With Brass Lug & Adjustable Ear
Knockouts: 20mm & 25mm

CAT#	Size mm	Depth mm	Thickness mm
GB335*	3"x3"	35	0.6~1.5
GB347*	3"x3"	47	0.6~1.5
GB635*	3"x6"	35	0.6~1.5
GB647*	3"x6"	47	0.6~1.5

Replace * with required thickness.
06 for 0.6mm, 10 for 1.0mm till 15 for 1.5mm.



Metal Clad Box

Material: Steel with Powder Coated
With Brass Lug & Fixed Ear
Knockouts: 20mm & 25mm

CAT#	Size mm	Depth mm	Thickness mm
GB335*	3"x3"	40	0.6~1.5
GB347*	3"x3"	50	0.6~1.5
GB635*	3"x6"	40	0.6~1.5
GB647*	3"x6"	50	0.6~1.5

Replace * with required thickness.
08 for 0.8mm, 10 for 1.0mm till 15 for 1.5mm.

Adaptable GI Box with Cover

Material: Pre-Galvanized Steel
Knockouts: 20mm & 25mm

CAT#	Size mm	Depth mm	Thickness mm
AGB32*	75*75	50	0.8~1.5
AGB33*	75*75	75	0.8~1.5
AGB42*	100*100	50	0.8~1.5
AGB43*	100*100	75	0.8~1.5
AGB44*	100*100	100	0.8~1.5
AGB62*	150*150	50	0.8~1.5
AGB63*	150*150	75	0.8~1.5
AGB64*	150*150	100	0.8~1.5
AGB66*	150*150	150	0.8~1.5

Replace * with required thickness.
08 for 0.8mm, 10 for 1.0mm till 15 for 1.5mm.



GFCI Receptacle

Features

- Protect against ground fault shock hazard from frayed wiring,damaged appliances,wherever electrical contact might provide a path to ground through a human body.
- Electromagnetic operating mechanism make our GFCI more stable and durable.
- With end of life notification,our GFCI complies with the latest UL standard.
- When the GFCI trips,the RESET button will protrude,which provides clear notification of GFCI's status.
- With SMT technology,the chip electronic components become more stable.
- Trip at 5mA(±1mA) threshold.
- Trip in 0.025 seconds for 240mA fault.
- Can be wired to provide feed-through protection to other outlets on the same circuit.



CAT#	Description	Rating
HG15	Duplex,with LED Indicator Light	15A 125V,5-15R
HG20	Duplex,with LED Indicator Light	20A 125V,5-20R
HGA15	Automated Monitoring,Dural LED Displaying with a Panel	15A 125V,5-15R
HGA20	Automated Monitoring,Dural LED Displaying with a Panel	20A 125V,5-20R
HGA15-TR	Automated Monitoring,Dural LED Displaying with a Panel TR Receptacle	15A 125V,5-15R
HGA20-TR	Automated Monitoring,Dural LED Displaying with a Panel TR Receptacle	20A 125V,5-20R

USB Charger Receptacle

Features

- Smart chip recognizes and optimizes the charging requirements of both Apple and Android devices
- Tamper Resistant (TR) Receptacles increase safety
- Charge electronic devices directly without an adapter
- Back and side wiring for easy installation
- Wallplate included,Fits into a standard wall box



CAT#	Description	Rating
UR1540	Dual USB Charger with 15A Duplex Tamper Resistant Receptacle	15A 125V,5-15R 60Hz,5V DC 4.0A
UR2040	Dual USB Charger with 20A Duplex Tamper Resistant Receptacle	20A 125V,5-20R 60Hz,5V DC 4.0A
UR1521	Dual USB Charger with 15A Duplex Tamper Resistant Receptacle	15A 125V,5-15R 60Hz,5V DC 2.1A
UR2021	Dual USB Charger with 20A Duplex Tamper Resistant Receptacle	20A 125V,5-20R 60Hz,5V DC 2.1A

Standard Receptacles

CAT#	DESCRIPTION
YQ15R-S	Residential Grade Duplex Receptacle Push-In and Side Wired 15A/125V, 5-15R
YQ15R-C	Commercial Grade Duplex Receptacle Side Wired Only, Self-Grounding 15A/125V, 5-15R
YQ115R	Commercial Grade Side Wired Only Single Receptacle 15A/125V, 5-15R
YQ15R-I	Industrial Grade Duplex Receptacle Back and Side Wired Self-Grounding 15A/125V, 5-15R
YQ20RH-IG	Isolated Grade Duplex Receptacle Back and Side Wired Self-Grounding 20A/250V, 6-20R

CAT#	DESCRIPTION
YQ15R-S-S	Residential Grade Duplex Receptacle Push-In and Side Wired Self-Grounding 15A/125V, 5-15R
YQ20R-C	Commercial Grade Duplex Receptacle Side Wired Only Self-Grounding 20A/125V, 5-20R
YQ120RH	Commercial Grade Single Receptacle Side Wired Only 20A/250V, 6-20R
YQ20RH-I	Industrial Grade Duplex Receptacle Back and Side Wired Self-Grounding 20A/250V, 6-20R
YQ15R-HG	Hospital Grade Duplex Receptacle Back and Side Wired Self-Grounding 15A/125V, 5-15R

Decorator Receptacles

CAT#	DESCRIPTION
YQ15R-D	Residential Grade Duplex Receptacle Push-In and Side Wired 15A/125V, 5-15R
YQ15R-DI	Industrial Grade Duplex Receptacle Back and Side Wired Self-Grounding 15A/125V, 5-15R

CAT#	DESCRIPTION
YQ15R-D-S	Residential Grade Duplex Receptacle Push-In and Side Wired Self-Grounding 15A/125V, 5-15R
YQ20R-DI	Industrial Grade Duplex Receptacle Back and Side Wired, Self-Grounding 20A/125V, 5-20R

Switches

CAT#	DESCRIPTION
YQDS115-Q	Residential Grade Quiet Decorator Switches Push-In and Side Wired 15A/120-277V AC Single-Pole
YQDS3K-15	Residential Grade Triple Rocker Switches Push-In Only 15A/120-277V AC Single-Pole
YQRTS215	Residential Grade Standard Combination Devices Toggle Switch/Receptacle 15A/120V AC Switch 15A/125V Receptacle Single-Pole
YQTS115	Residential Grade Toggle Switch Push-In and Side Wired 15A/ 120-277V AC Single-Pole

CAT#	DESCRIPTION
YQDS215	Residential Grade Rocker Switches Side Wired Only 15A/120-277V AC Two Single-Pole
YQRDS215	Residential Grade Combination Devices Decorator Rocker Switch/Receptacle 15A/120V Switch 15A/125V Receptacle Single-Pole
YQTS215	Residential Grade Standard Combination Devices Toggle Switches Side Wired Only 15A/120V AC Two Single-Pole
YQTS120	Commercial Grade Toggle Switch Back and Side Wired 20A/120-277V AC Single-Pole

Standard Tamper & Weather Resistant Receptacles

CAT#	DESCRIPTION	CAT#	DESCRIPTION
YQ15R-STR	Residential Grade Standard Duplex Receptacle 2 Pole, 3 Wire Grounding Push-In and Side Wired 15A/125V, 5-15R	YQ15RS-STR	Residential Grade Standard Duplex Receptacle 2 Pole, 3 Wire Grounding Push-In and Side Wired Self-Grounding, 15A/125V, 5-15R
TR20-SC	Commercial Grade Duplex Receptacle Back and Side Wired Self-Grounding, Tamper-Resistant 20A/125V, 5-20R	TWR20-SC	Commercial Grade Duplex Receptacle Back and Side Wired 2 Pole, 3 Wire Grounding Self-Grounding, Tamper-Resistant, 20A/125V, 5-20R
TR15-SI	Industrial Grade Duplex Receptacle Back and Side Wired Self-Grounding, Tamper-Resistant 15A/125V, 5-15R	TR20-SI	Industrial Grade Duplex Receptacle Back and Side Wired Self-Grounding, Tamper-Resistant 20A/125V, 5-20R
TR15-SHG	Hospital Grade Duplex Receptacle Back and Side Wired Self-Grounding, Tamper-Resistant 15A/125V, 5-15R	TWR15-SHG	Hospital Grade Duplex Receptacle Back and Side Wired 2 Pole, 3 Wire Grounding Self-Grounding Tamper & Weather Resistant 15A/125V, 5-15R
TR15-SIG	Industrial Grade Isolated Ground Duplex Receptacle Back and Side Wired Self-Grounding, Tamper-Resistant 15A/125V, 5-15R	TWR15-SIG	Isolated Ground Duplex Receptacle Back and Side Wired 2 Pole, 3 Wire Grounding Self-Grounding, Tamper-Resistant, 15A/125V, 5-15R
TR115R	Commercial Grade Single Receptacle 2 Pole, 3 Wire Grounding Side Wired Only Tamper Resistant 15A/125V, 5-15R	TR120R	Commercial Grade Single Receptacle 2 Pole, 3 Wire Grounding Side Wired Only Tamper Resistant 20A/125V, 5-20R

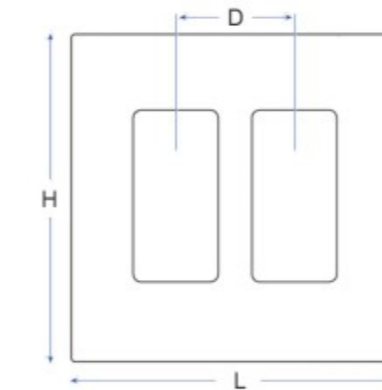
Decorator Tamper & Weather Resistant Receptacle

CAT#	DESCRIPTION	CAT#	DESCRIPTION
TR15-DC	Commercial Grade Duplex Receptacle Back and Side Wired Self-Grounding, Tamper-Resistant 15A/125V, 5-15R	TR20-DC	Commercial Grade Duplex Receptacle Back and Side Wired Self-Grounding, Tamper-Resistant 20A/125V, 5-20R
TR15-DI	Industrial Grade Duplex Receptacle Back and Side Wired Self-Grounding, Tamper-Resistant 15A/125V, 5-15R	TR20-DI	Industrial Grade Duplex Receptacle Back and Side Wired Self-Grounding, Tamper-Resistant 20A/125V, 5-20R
TR15-DHG	Hospital Grade Duplex Receptacle Back and Side Wired Self-Grounding, Tamper-Resistant 15A/125V, 5-15R	TR20-DHG	Hospital Grade Duplex Receptacle Back and Side Wired Self-Grounding, Tamper-Resistant 20A/125V, 5-20R
TWR15-DC	Commercial Grade Duplex Receptacle Back and Side Wired Self-Grounding, Tamper-Resistant 15A/125V, 5-15R *This Item Does Not Include The Wall plate	TWR20-DC	Commercial Grade Duplex Receptacle Back and Side Wired Self-Grounding, Tamper-Resistant 20A/125V, 5-20R *This Item Does Not Include The Wall plate
TWR15-DIG	Isolated Ground Duplex Receptacle Back and Side Wired Self-Grounding, Tamper-Resistant 15A/125V, 5-15R *This Item Does Not Include The Wall plate	TWR20-DIG	Isolated Ground Duplex Receptacle Back and Side Wired Self-Grounding, Tamper-Resistant 20A/125V, 5-20R *This Item Does Not Include The Wall plate

Wall Plate

Features

- HAN YSEN Wallplate is made of high quality polycarbonate and 430 Stainless Steel.
- High impact resistance limits access to live parts due to breakage
- Smooth finish without recessed lines is easy to clean and maintain attractive appearance



Wallplate Dimensional Information

Description		Height H (mm)	Width L (mm)	Gang to Gang D (mm)
1 Gang	Standard	4.5" (114.3mm)	2.76" (70.0mm)	-
	Mid-Size	4.88" (124.0mm)	3.11" (79.0mm)	-
	Over-Size	5.51" (140.0mm)	3.50" (89.0mm)	-
2 Gang	Standard	4.5" (114.3mm)	4.57" (116mm)	1.81" (46mm)
	Mid-Size	4.88" (124.0mm)	4.92" (125mm)	1.81" (46mm)
	Over-Size	5.51" (140.0mm)	5.51" (140.0mm)	1.81" (46mm)
3 Gang	Standard	4.5" (114.3mm)	6.38" (162mm)	1.81" (46mm)
	Mid-Size	4.88" (124.0mm)	6.77" (172mm)	1.81" (46mm)
	Over-Size	5.51" (140.0mm)	7.48" (190mm)	1.81" (46mm)

Blank Wallplate

Description	Color	CAT#		
		Standard	Mid-Size	Over-Size
1 Gang	White	WP1001-1	WP1001M-1	WP1001L-1
	Ivory	WP1001-2	WP1001M-2	WP1001L-2
	430 SS	WP1101	WP1101M	WP1101L
2 Gang	White	WP2001-1	WP2001M-1	-
	Ivory	WP2001-2	WP2001M-2	-
	430 SS	WP2101	-	-

Toggle Switch Wallplate

Description	Color	CAT#		
		Standard	Mid-Size	Over-Size
1 Gang	White	WP1002-1	WP1002M-1	WP1002L-1
	Ivory	WP1002-2	WP1002M-2	WP1002L-2
	430 SS	WP1102	WP1102M	WP1102L
2 Gang	White	WP2002-1	WP2002M-1	-
	Ivory	WP2002-2	WP2002M-2	-
	430 SS	WP2122	-	-



Duplex Receptacle Wallplate

Description	Color	CAT#		
		Standard	Mid-Size	Over-Size
1 Gang	White	WP1003-1	WP1003M-1	WP1003L-1
	Ivory	WP1003-2	WP1003M-2	WP1003L-2
	430 SS	WP1103	WP1103M	WP1103L
2 Gang	White	WP2033-1	WP2033M-1	-
	Ivory	WP2033-2	WP2033M-2	-
	430 SS	WP2133	-	-



Decorator/GFCI Wallplate

Description	Color	CAT#		
		Standard	Mid-Size	Over-Size
1 Gang	White	WP1004-1	WP1004M-1	WP1004L-1
	Ivory	WP1004-2	WP1004M-2	WP1004L-2
	430 SS	WP1103	WP1103M	WP1103L
2 Gang	White	WP2044-1	WP2044M-1	-
	Ivory	WP2044-2	WP2044M-2	-
	430 SS	WP2144	-	-



Single Receptacle Wallplate

Description	Color	CAT#		
		Standard	Mid-Size	Over-Size
1 Gang	White	WP1005-1	-	-
	Ivory	WP1005-2	-	-
	430 SS	WP1105	WP1105M	WP1105L
2 Gang	White	WP2055-1	-	-
	Ivory	WP2055-2	-	-
	430 SS	WP2155	-	-



Combination Two Gang Wallplate

Description	Color	CAT#		
		Standard	Mid-Size	Over-Size
Toggle and Duplex	White	WP2023-1	-	-
	Ivory	WP2023-2	-	-
	430 SS	WP2123	WP2123M	WP2123L
Toggle and Decorator/GFCI	White	WP2024-1	-	-
	Ivory	WP2024-2	-	-
	430 SS	WP2124	-	-
Duplex and Decorator/GFCI	White	WP2034-1	-	-
	Ivory	WP2034-2	-	-
	430 SS	WP2134	-	-

Meter Socket

Features

- Standard meter sockets are manufactured from 1.2-1.5mm galvanized steel sheet with a baked gray powder polyester paint finish to improve corrosion resistance.
- The meter socket is suitable for service voltage 600V AC max.
- Ample gutter space for easy wiring.
- Convenient knockouts in the side back and bottom.
- Lay in type terminals with pressure plates for easy connections.
- The meter socket is designed to fit conduit hubs from 1" up to 2-1/2".



CAT#	Description	Height (mm)	Width(mm)	Depth(mm)
MS100S-4J	1 Phase,100A,4 Jaw, Ring Type	223	190	86
MS100S-4J-H	1 Phase,100A,4 Jaw, Ring Type with Hub			
MS125-4J-R	1 Phase,125A,4 Jaw, Ring Type	291	203	84
MS125-5J-R	1 Phase,125A,5 Jaw, Ring Type			
MS125-4J-RL	1 Phase,125A,4 Jaw, Ringless Type			
MS125-5J-RL	1 Phase,125A,5 Jaw, Ringless Type			
MS200-4J-R	1 Phase,200A,4 Jaw, Ring Type	396	203	108
MS200-5J-R	1 Phase,200A,5 Jaw, Ring Type			
MS200-7J-R	3 Phase,200A,7 Jaw, Ring Type			
MS200-4J-RL	1 Phase,200A,4 Jaw, Ringless Type			
MS200-5J-RL	1 Phase,200A,5 Jaw, Ringless Type			
MS200-7J-RL	3 Phase,200A,7 Jaw, Ringless Type			
MS20-6J-RL	1 Phase,20A,6 Jaw, Ringless Type	355	203	84
MS20-13J-RL	3 Phase,20A,13 Jaw, Ringless Type			
MS320-4J-RL	1 Phase,320A,4 Jaw, Ringless Type			
		716	332	132

Straight Blade Plugs and Connectors
Enchufe & Conector



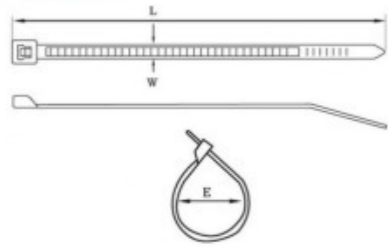
CAT#	Rating	CAT#	Rating
HP01	15A 125V, 1-15P	HS01	15A 125V, 1-15R
HP02	15A 125V, 5-15P	HS02	15A 125V, 5-15R
HP05	15A 125V, 5-15P	HS05	15A 125V, 5-15R
HP06	15A 250V, 6-15P	HS06	15A 250V, 6-15R
HP10	15A 125V, 1-15P	HS10	15A 125V, 1-15R

CAT#	Rating	CAT#	Rating
HP11	15A 125V, 5-15P	HS11	15A 125V, 5-15R
HP12	15A 250V, 6-15P	HS12	15A 250V, 6-15R
HP13	50A 125/250V 3-Pole 3-Wire 10-50P	HS13	50A 125/250V 3-Pole 3-Wire 10-50R
HS14	50A 125/250V 3-Pole 3-Wire 10-50R		

CAT#	Rating	CAT#	Rating
HS11	15A 125V, 5-15R	HS12	15A 250V, 6-15R
HS13	50A 125/250V 3-Pole 3-Wire 10-50R		



Nylon Cable Tie



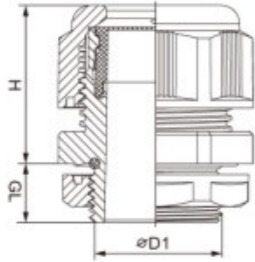
CAT#	Trade Size	L		W mm	E mm	Tensile Strength	
		Inch	mm			LBS	KGS
T25060	2.5x60	2.4"	60	2.5	2-11	18	8
T25080	2.5x80	3.2"	80		2-16		
T25100	2.5x100	4.0"	100		2-22		
T25120	2.5x120	4.7"	120		2-30		
T25150	2.5x150	6.0"	150		2-35		
T25160	2.5x160	6.3"	160		2-40		
T25200	2.5x200	8.0"	200		2-50		
T36140	3.6x140	5.5"	140		3-33		
T36150	3.6x150	6.0"	150	3-35			
T36180	3.6x180	7.1"	180	3-42			
T36200	3.6x200	8.0"	200	3-50			
T36250	3.6x250	10"	250	3-65			
T36280	3.6x280	11"	280	3-70			
T36300	3.6x300	12"	300	3-80			
T36370	3.6x370	14.6"	370	3-105			
T36400	3.6x400	16"	400	3-105			
T48100	4.8x100	4"	100	3-22	4.8	50	22
T48120	4.8x120	4.7"	120	3-30			
T48160	4.8x160	6.3"	160	3-40			
T48180	4.8x180	7.1"	180	3-42			
T48190	4.8x190	7.5"	190	3-46			
T48200	4.8x200	8.0"	200	3-50			
T48250	4.8x250	10"	250	3-65			
T48280	4.8x280	11"	280	3-70			
T48300	4.8x300	12"	300	3-80			
T48350	4.8x350	14"	350	3-90			
T48360	4.8x360	14.2"	360	3-94			
T48370	4.8x370	14.6"	370	3-98			
T48380	4.8x380	15"	380	3-102			
T48400	4.8x400	16"	400	3-105			
T48430	4.8x430	16.9"	430	3-120			
T48450	4.8x450	17.7"	450	3-130			
T48500	4.8x500	19.7"	500	3-150			
T48550	4.8x550	21.6"	550	3-162			
T48920	4.8x920	36.2"	920	3-265			

CAT#	Trade Size	L		W mm	E mm	Tensile Strength				
		Inch	mm			LBS	KGS			
T72150	7.2x150	6.0"	150	7.2	3-35	120	55			
T72200	7.2x200	8.0"	200		3-50					
T72250	7.2x250	10"	250		4-65					
T72280	7.2x280	11"	280		4-78					
T72300	7.2x300	12"	300		4-80					
T72350	7.2x350	14"	350		4-90					
T72370	7.2x370	14.6"	370		4-98					
T72380	7.2x380	15"	380		4-100					
T72400	7.2x400	16"	400		4-105					
T72450	7.2x450	18"	450		4-110					
T72500	7.2x500	20"	500		4-150					
T72550	7.2x550	21.6"	550		4-165					
T721000	7.2x1000	40"	1000		4-300					
T76200	7.6x200	8.0"	200		7.6			3-50	120	55
T76250	7.6x250	10"	250					4-65		
T76280	7.6x280	11"	280	4-78						
T76300	7.6x300	12"	300	4-80						
T76370	7.6x370	14.6"	370	4-98						
T76380	7.6x380	15"	380	4-100						
T76400	7.6x400	16"	400	4-105						
T76450	7.6x450	18"	450	4-110						
T76500	7.6x500	20"	500	4-150						
T76530	7.6x530	20.9"	530	4-160						
T76550	7.6x550	21.6"	550	4-165						
T76750	7.6x750	29.5"	750	4-225						
T88278	8.8x278	11"	278	8.8		8-75	175	79.4		
T88400	8.8x400	16"	400			8-105				
T88450	8.8x450	18"	450			8-118				
T88500	8.8x500	20"	500		8-150					
T88550	8.8x550	21.6"	550		8-160					
T88600	8.8x600	23.6"	600		8-170					
T88650	8.8x650	25.6"	650		8-185					
T88720	8.8x720	28.3"	720		10-195					
T88800	8.8x800	31.5"	800		10-230					
T88900	8.8x900	35.5"	900		10-265					
T881000	8.8x1000	40"	1000		10-300					
T881100	8.8x1100	43.3"	1100		10-335					
T881200	8.8x1200	47.2"	1200		10-370					

Nylon Cable Gland

Material: PA (Nylon) UL 94

Working Temperature: -40°C to 100°C in static state, Instantaneous heat resistance up to 120°C
-20°C to 80°C in dynamic state, Instantaneous heat resistance up to 100°C



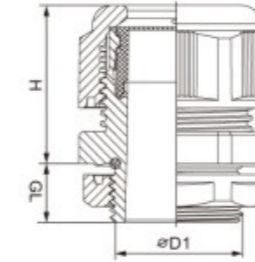
CAT#	Thread \varnothing D1	Dimension (mm)		Cable Range mm
		H	GL	
NGP0707	PG7	21	8	3-6.5
NGP0705	PG7	21	8	2-5
NGP0908	PG9	21	8	4-8
NGP0906	PG9	22	8	2-6
NGP1110	PG11	25	8	5-10
NGP1107	PG11	25	8	3-7
NGP13512	PG13.5	27	9	6-12
NGP13509	PG13.5	27	9	5-9
NGP1614	PG16	28	10	10-14
NGP1612	PG16	28	10	7-12
NGP2118	PG21	31	11	13-18
NGP2116	PG21	31	11	9-16
NGP2925	PG29	39	11	18-25
NGP2920	PG29	39	11	13-20
NGP3632	PG36	48	13	22-32
NGP3626	PG36	48	13	20-26
NGP4238	PG42	49	13	32-38
NGP4231	PG42	49	13	25-31
NGP4844	PG48	49	14	37-44
NGP4835	PG48	49	14	29-35

CAT#	Thread \varnothing D1	Dimension (mm)		Cable Range mm
		H	GL	
NGM1207	M12x1.5	21	8	3-6.5
NGM1205	M12x1.5	21	8	2-5
NGM1608	M16x1.5	22	8	4-8
NGM1606	M16x1.5	22	8	2-6
NGM1610	M16x1.5	25	8	5-10
NGM2012	M20x1.5	27	9	6-12
NGM2009	M20x1.5	27	9	5-9
NGM2014	M20x1.5	28	9	10-14
NGM2414	M24x1.5	28	12	10-14
NGM2518	M25x1.5	31	11	13-18
NGM2516	M25x1.5	31	11	9-16
NGM3225	M32x1.5	39	11	18-25
NGM3220	M32x1.5	39	11	13-20
NGM4032	M40x1.5	48	13	22-32
NGM4026	M40x1.5	48	13	20-26
NGM4033	M40x1.5	48	13	23-33.5
NGM5038	M50x1.5	49	13	32-38
NGM5031	M50x1.5	49	13	25-31

Metal Cable Gland

Material: Nickel-Plated Brass

Working Temperature: -40°C to 100°C in static state, Instantaneous heat resistance up to 120°C



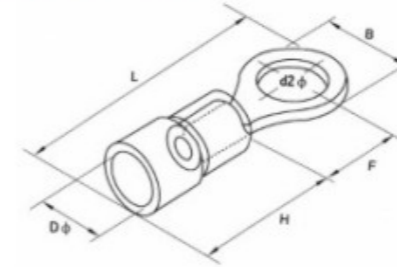
CAT#	Thread \varnothing D1	Dimension (mm)		Cable Range mm
		H	GL	
MGP0707	Pg7	19	5	3-6.5
MGP0705	PG7	19	5	2-5
MGP0908	PG9	21	6	4-8
MGP0906	PG9	21	6	2-6
MGP1110	PG11	22	6	5-10
MGP1107	PG11	22	6	3-7
MGP13512	PG13.5	23	6.5	6-12
MGP13509	PG13.5	23	6.5	5-9
MGP1614	PG16	24	6.5	10-14
MGP1612	PG16	24	6.5	7-12
MGP2118	PG21	25	7	13-18
MGP2116	PG21	25	7	9-16
MGP2925	PG29	31	8	18-25
MGP2920	PG29	31	8	13-20
MGP3632	PG36	37	8	22-32
MGP3626	PG36	37	8	20-26
MGP4238	PG42	38	9	32-38
MGP4231	PG42	38	9	25-31
MGP4844	PG48	49	10	37-44
MGP4835	PG48	49	10	29-35

CAT#	Thread \varnothing D1	Dimension (mm)		Cable Range mm
		H	GL	
MGM1207	M12x1.5	19	6.5	3-6.5
MGM1205	M12x1.5	21	6.5	2-5
MGM1608	M16x1.5	21	6	4-8
MGM1606	M16x1.5	22	6	2-6
MGM1610	M16x1.5	23	6	5-10
MGM2012	M20x1.5	23	6	6-12
MGM2009	M20x1.5	24	6	5-9
MGM2014	M20x1.5	25	6	10-14
MGM2518	M25x1.5	25	7	13-18
MGM2516	M25x1.5	31	7	9-16
MGM3225	M32x1.5	31	8	18-25
MGM3220	M32x1.5	37	8	13-20
MGM4032	M40x1.5	37	8	22-32
MGM4026	M40x1.5	37	8	20-26
MGM5038	M50x1.5	37	9	32-38
MGM5031	M50x1.5		9	25-31

Heat Shrinkable Tube



Ring Insulated Terminal



CAT#	Trade Size	Before Supplied		After Supplied		Wire Range mm
		I.D.(mm)	Thickness(mm)	I.D.(mm)	Thickness(mm)	
ST010	1.0mm	1.0±0.2	0.2±0.05	0.4±0.1	0.28±0.05	0.75-0.9
ST015	1.5mm	1.5±0.3	0.2±0.05	0.6±0.1	0.32±0.05	0.95-1.4
ST020	2.0mm	2.0±0.3	0.25±0.05	0.9±0.1	0.35±0.05	1.1-1.8
ST025	2.5mm	2.5±0.3	0.25±0.05	1.1±0.1	0.38±0.05	1.35-2.3
ST030	3.0mm	3.0±0.3	0.25±0.05	1.4±0.1	0.40±0.05	1.6-2.7
ST035	3.5mm	3.5±0.4	0.25±0.05	1.6±0.1	0.42±0.05	1.85-3.2
ST040	4.0mm	4.0±0.4	0.25±0.05	1.8±0.1	0.45±0.05	2.1-3.6
ST045	4.5mm	4.5±0.4	0.25±0.15	1.9±0.1	0.50±0.15	2.35-4
ST050	5.0mm	5.0±0.4	0.25±0.15	2.3±0.1	0.55±0.15	2.6-4.5
ST060	6.0mm	6.0±0.4	0.28±0.15	2.8±0.2	0.55±0.15	3.1-5.4
ST070	7.0mm	7.0±0.4	0.28±0.15	3.3±0.2	0.55±0.15	3.7-6.3
ST080	8.0mm	8.0±0.5	0.28±0.15	3.8±0.2	0.55±0.15	4.2-7.2
ST090	9.0mm	9.0±0.5	0.30±0.15	4.3±0.2	0.55±0.15	4.7-8
ST100	10mm	10±0.5	0.30±0.15	4.8±0.2	0.55±0.15	5.2-9
ST110	11mm	11±0.5	0.30±0.15	5.3±0.2	0.60±0.15	5.7-10
ST120	12mm	12±0.5	0.30±0.15	5.7±0.3	0.60±0.15	6.2-11
ST130	13mm	13±0.5	0.33±0.15	6.2±0.3	0.60±0.15	6.7-12
ST140	14mm	14±0.5	0.35±0.15	6.7±0.3	0.60±0.15	7.3-13
ST150	15mm	15±0.6	0.38±0.15	7.2±0.3	0.65±0.15	7.8-14
ST160	16mm	16±0.6	0.38±0.15	7.7±0.3	0.65±0.15	8.3-15
ST170	17mm	17±0.6	0.38±0.15	8.2±0.3	0.65±0.15	8.8-16
ST180	18mm	18±0.6	0.40±0.15	8.7±0.3	0.65±0.15	9.3-17
ST200	20mm	20±0.8	0.40±0.20	9.7±0.3	0.75±0.20	10.4-19
ST220	22mm	22±0.8	0.42±0.20	10±1.0	0.75±0.20	11.4-21
ST250	25mm	25±0.8	0.45±0.20	11±1.0	0.75±0.20	12.8-24
ST280	28mm	28±0.8	0.45±0.20	13±1.0	0.75±0.20	14.4-26
ST300	30mm	30±0.8	0.45±0.20	14±1.0	0.75±0.20	16-29
ST350	35mm	35±0.8	0.50±0.20	16±1.0	0.85±0.20	18-34
ST400	40mm	40±1.0	0.50±0.20	19±1.0	0.85±0.20	21-39
ST500	50mm	50±1.0	0.65±0.20	24±1.0	0.85±0.20	26-49

Cable Size: 0.5-1.5mm² (AWG22-16) Max Current: IMAX=19A Material: 0.75mm Copper

CAT#	ITEM NO.	USA Screw	Screw Dia. d2(mm)	Dimemision(mm)				H	Dφ	Color
				B	L	F				
HT001	RV1.25-3	#4	3.2	5.7	17.8	4.95	10	4.3	RED	
HT002	RVS1.25-3.5	#6	3.7	5.7	17.8	4.95				
HT003	RVM1.25-3.5	#6	3.7	6.6	20.1	6.3				
HT004	RVL1.25-3.5	#6	3.7	8	21.5	7				
HT005	RVS1.25-4	#8	4.3	6.6	21.5	6.3				
HT006	RVL1.25-4	#8	4.3	8	20.1	7				
HT007	RVS1.25-5	#10	5.3	8	21.5	7				
HT008	RVL1.25-5	#10	5.3	9.8	24.5	8.5				
HT009	RVS1.25-6	1/4	6.5	9.8	23	8.5				
HT010	RVL1.25-6	1/4	6.5	11.6	23	11.1				
HT011	RV1.25-8	5/16	8.5	11.6	27.5	11.1				
HT012	RV1.25-10	3/8	10.5	13.6	31.6	13.9				
HT013	RV1.25-12	1/2	13	19.2	36	16.5				

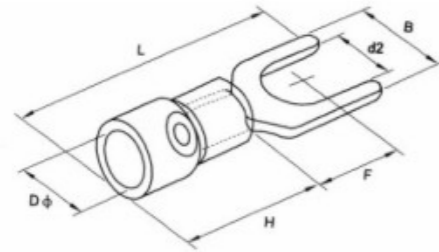
Cable Size: 1.5-2.5mm² (AWG16-14) Max Current: IMAX=27A Material: 0.8mm Copper

CAT#	ITEM NO.	USA Screw	Screw Dia. d2(mm)	Dimemision(mm)				H	Dφ	Color
				B	L	F				
HT014	RV2-3	#4	3.2	6.6	17.8	4.3	10	4.9	BLUE	
HT015	RVS2-3.5	#6	3.7	6.6	17.8	4.3				
HT016	RVM2-3.5	#6	3.7	6.6	21	7				
HT017	RVL2-3.5	#6	3.7	8.5	22.5	7.75				
HT018	RVS2-4	#8	4.3	6.6	21	6.5				
HT019	RVL2-4	#8	4.3	8.5	22.5	7				
HT020	RVS2-5	#10	4.3	8.5	22.5	7.75				
HT021	RVL2-5	#10	5.3	9.5	22.5	7.75				
HT022	RV2-6	1/4	6.5	12	27.6	11				
HT023	RV2-8	5/16	8.5	12	27.6	11				
HT024	RV2-10	3/8	10.5	13.6	30.2	13.9				
HT025	RV2-12	1/2	13	19.2	36.5	16.5				

Cable Size: 4-6mm² (AWG12-10) Max Current: IMAX=48A Material: 1.0mm Copper

CAT#	ITEM NO.	USA Screw	Screw Dia. d2(mm)	Dimemision(mm)				H	Dφ	Color
				B	L	F				
HT026	RV5.5-3.5	#6	3.7	7.2	21.4	5.9	13	6.7	YELLOW	
HT027	RVS5.5-4	#8	4.3	7.2	21.4	5.9				
HT028	RVL5.5-4	#8	4.3	9.5	25.5	8.3				
HT029	RV5.5-5	#10	5.3	9.5	25.5	8.3				
HT030	RV5.5-6	1/4	6.5	12	31.5	13				
HT031	RV5.5-8	5/16	8.5	15	33.7	13.7				
HT032	RV5.5-10	3/8	10.5	15	33.7	13.7				
HT033	RV5.5-12	1/2	13	19.2	38.1	16				

Spade Insulated Terminal

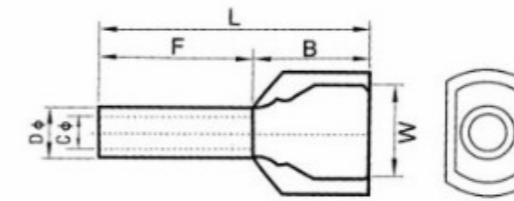


Cable Size: 0.5-1.5mm ² (AWG22-16)			Max Current: I _{MAX} =19A		Material: 0.75mm Copper				
CAT#	ITEM NO.	USA Screw	Screw Dia. d2(mm)	B	L	F	H	Dφ	Color
HT101	SV1.25-3	#4	3.2	5.7	21.2	6.5	10	4.3	RED
HT102	SVS1.25-3.5	#6	3.7	5.7	21.2	6.5			
HT103	SVL1.25-3.5	#6	3.7	6.4	21.2	6.5			
HT104	SVS1.25-4	#8	4.3	6.4	21.2	6.5			
HT105	SVM1.25-4	#8	4.3	7.2	21.2	6.5			
HT106	SVL1.25-4	#8	4.3	8.1	21.2	6.5			
HT107	SVS1.25-5	#10	5.3	8.1	21.2	6.5			
HT108	SVL1.25-5	#10	5.3	9.5	21.2	6.5			
HT109	SVS1.25-6	1/4	6.5	9.5	21.2	6.5			
HT110	SVL1.25-6	1/4	6.5	12.0	27.2	11.0			

Cable Size: 1.5-2.5mm ² (AWG16-14)			Max Current: I _{MAX} =27A		Material: 0.8mm Copper				
CAT#	ITEM NO.	USA Screw	Screw Dia. d2(mm)	B	L	F	H	Dφ	Color
HT111	SV2-3	#4	3.2	5.7	21.2	6.5	10	4.9	BLUE
HT112	SVS2-3.5	#6	3.7	5.7	21.2	6.5			
HT113	SVL2-3.5	#6	3.7	6.4	21.2	6.5			
HT114	SVS2-4	#8	4.3	6.4	21.2	6.5			
HT115	SVM2-4	#8	4.3	7.2	21.2	6.5			
HT116	SVL2-4	#8	4.3	8.1	21.2	6.5			
HT117	SVS2-5	#10	5.3	8.1	21.2	6.5			
HT118	SVL2-5	#10	5.3	9.5	21.2	6.5			
HT119	SVS2-6	1/4	6.5	9.5	21.2	6.5			
HT120	SVL2-6	1/4	6.5	12.0	27.2	11.0			

Cable Size: 1.5-2.5mm ² (AWG16-14)			Max Current: I _{MAX} =27A		Material: 0.8mm Copper				
CAT#	ITEM NO.	USA Screw	Screw Dia. d2(mm)	B	L	F	H	Dφ	Color
HT121	SV5.5-3.5	#6	3.7	8.3	25.2	7.5	13	6.7	YELLOW
HT122	SVS5.5-4	#8	4.3	8.3	25.2	7.5			
HT123	SVL5.5-4	#8	4.3	9.0	25.2	7.5			
HT124	SV5.5-5	#10	5.3	9.0	25.2	7.5			
HT125	SVS5.5-6	1/4	6.5	9.0	25.2	7.5			
HT126	SVL5.5-6	1/4	6.5	12.0	31.2	12.0			
HT127	SV5.5-8	5/16	8.5	14.0	30.0	11.5			

Crewel Tube Pre-Insulating Terminal



Max Voltate: 105℃ UI300V		Material: Copper		Insulating Material: Nylon					
CAT#	ITEM NO.	Wire Range (AWG/mm ²)	F	L	W	B	Dφ	Dφ	
HT201	TE0508	2x22 / 2x0.5	8	14.5	5	6.5	1.8	1.5	
HT202	TE7508	2x20 / 2x0.75	8	14.5	5.5	6.7	2.1	1.8	
HT203	TE7510	2x20 / 2x0.75	10	16.7					
HT204	TE1008	2x18 / 2x1.0	8	15.1	5.5	7.1	2.3	2	
HT205	TE1010	2x18 / 2x1.0	10	17.1					
HT206	TE1508	2x16 / 2x1.5	8	15.5	6.4	7.2	2.6	2.3	
HT207	TE1512	2x16 / 2x1.5	12	19.5					
HT208	TE2510	2x14 / 2x2.5	10	18.5	8	8.5	3.3	2.9	
HT209	TE2513	2x14 / 2x2.5	13	21.5					
HT210	TE4012	2x12 / 2x4.0	12	23.1	8.8	11.1	4.2	3.8	
HT211	TE6014	2x10 / 2x6.0	14	26.1	9.5	12.1	5.3	4.9	
HT212	TE10-14	2x8 / 2x10.0	14	26.6	12.6	12.6	6.9	6.5	
HT213	TE16-14	2x6 / 2x16.0	14	31.3	19	17.3	8.7	8.3	

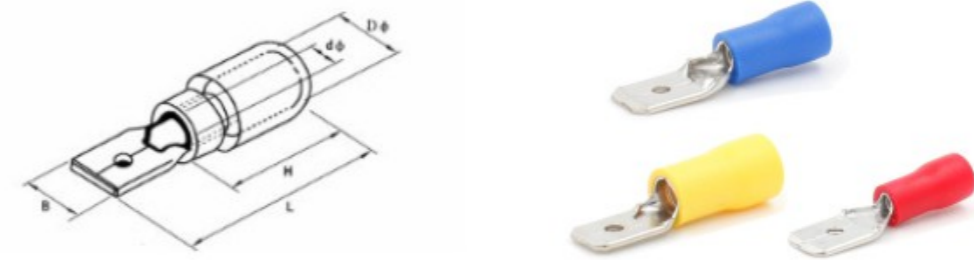


Insulated Core End Terminal



Max Voltate: 105°C UI300V		Material: Copper		Insulating Material: Nylon						
CAT#	ITEM NO.	Wire Range (AWG/mm ²)	Dimension(mm)					Dφ	Dφ	
			F	L	W	Dφ	Dφ			
HT301	E0506	22 / 0.5	6	12	2.6	1.3	1			
HT302	E0508		8	14						
HT303	E0510		10	16						
HT304	E0512		12	18						
HT305	E7506	20 / 0.75	6	12.4	2.8	1.5	1.2			
HT306	E7508		8	14.6						
HT307	E7510		10	16.4						
HT308	E7512		12	18.4						
HT309	E1006	18 / 1.0	6	12.4	3	1.7	1.4			
HT310	E1008		8	14.6						
HT311	E1010		10	16.4						
HT312	E1012		12	18.4						
HT313	E1508	18 / 1.0	8	14.6	3.5	2	1.7			
HT314	E1510		10	16.4						
HT315	E1512		12	18.4						
HT316	E1518		18	24.4						
HT317	E2508	14 / 1.5	8	15.2	4	2.6	2.3			
HT318	E2510		10	17.2						
HT319	E2512		12	19.2						
HT320	E2518		18	25.2						
HT321	E4009	12 / 4.0	9	16.5	4.4	3.2	2.8			
HT322	E4012		12	19.5						
HT323	E4018		18	25.5						
HT324	E6010	10 / 6.0	10	18	6.3	3.9	3.5			
HT325	E6012		12	20						
HT326	E6018		18	26						
HT327	E10-12	8 / 10.0	12	21.5	7.6	4.9	4.5			
HT328	E10-18		18	27.5						
HT329	E16-12	6 / 16.0	12	22.2	8.8	6.2	5.8			
HT330	E16-18		18	28.2						
HT331	E25-16	4 / 25.0	16	29	11.2	7.9	7.5			
HT332	E25-22		22	35						
HT333	E35-16	2 / 35.0	16	30	12.7	8.7	8.3			
HT334	E35-25		25	39						

Male Insulated Joint



Cable Size: 0.5-1.5mm ² (AWG22-16)		Max Current: I _{MAX} =10A		Material: Copper						
CAT#	ITEM NO.	Name Tab (mm)	Thickness of Material(mm)	Dimension(mm)					Color	
				B	dφ	Dφ	L	H		
HJ001	MDD 1.25-110(5)	0.25*2.8	0.5	2.8	1.7	4.3	17.7	10	RED	
HJ002	MDD 1.25-110(8)	0.8*2.8	0.8	2.8	1.7	4.3	17.7			
HJ003	MDD 1.25-187(5)	0.5*4.75	0.5	4.75	1.7	4.3	20			
HJ004	MDD 1.25-187(8)	0.8*4.75	0.8	4.75	1.7	4.3	20			
HJ005	MDD 1.25-250	0.8*6.35	0.4*2	6.35	1.7	4.3	21			

Cable Size: 1.5-2.5mm ² (AWG16-14)		Max Current: I _{MAX} =15A		Material: Copper						
CAT#	ITEM NO.	Name Tab (mm)	Thickness of Material(mm)	Dimension(mm)					Color	
				B	dφ	Dφ	L	H		
HJ006	MDD 2-187(5)	0.5*4.75	0.5	4.75	2.3	4.3	20	10	BLUE	
HJ007	MDD 2-187(5)	0.8*4.75	0.8	4.75	2.3	4.3	20			
HJ008	MDD 2-250	0.8*6.35	0.4*2	6.35	2.3	4.3	21			

Cable Size: 4-6mm ² (AWG12-10)		Max Current: I _{MAX} =24A		Material: Copper						
CAT#	ITEM NO.	Name Tab (mm)	Thickness of Material(mm)	Dimension(mm)					Color	
				B	dφ	Dφ	L	H		
HJ009	MDD 5.5-250	0.8*6.35	0.4*2	6.35	3.4	5.7	25	13	YELLOW	

Female Insulated Joint

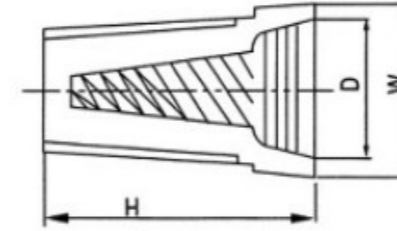


Cable Size: 0.5-1.5mm ² (AWG22-16)		Max Current: I _{MAX} =10A		Material: Copper				
CAT#	ITEM NO.	Name Tab (mm)	Thickness of Material(mm)	Dimension(mm)				Color
				B	dφ	Dφ	L	
HJ011	FDD 1.25-110(5)	0.5*2.8	0.3	3.8	1.7	3.8	19	RED
HJ012	FDD 1.25-110(8)	0.8*2.8	0.3	3.8	1.7	3.8	19	
HJ013	FDD 1.25-187(5)	0.8*4.75	0.35	5.6	1.7	3.8	19	
HJ014	FDD 1.25-187(8)	0.8*4.75	0.35	5.6	1.7	3.8	19	
HJ015	FDD 1.25-205	0.5*5.2	0.35	6.5	1.7	3.8	20	
HJ016	FDD 1.25-250	0.8*6.35	0.4	7.4	1.7	3.8	21	

Cable Size: 1.5-2.5mm ² (AWG16-14)		Max Current: I _{MAX} =15A		Material: Copper				
CAT#	ITEM NO.	Name Tab (mm)	Thickness of Material(mm)	Dimension(mm)				Color
				B	dφ	Dφ	L	
HJ017	FDD 2-110(5)	0.5*2.8	0.3	3.8	2.3	4.3	19	BLUE
HJ018	FDD 2-110(8)	0.8*2.8	0.3	3.8	2.3	4.3	19	
HJ019	FDD 2-187(5)	0.5*4.75	0.35	5.6	2.3	4.3	19	
HJ020	FDD 2-187(8)	0.8*4.75	0.35	5.6	2.3	4.3	19	
HJ021	FDD 2-205	0.5*5.2	0.35	6.5	2.3	4.3	20	
HJ022	FDD 2-250	0.8*6.35	0.4	7.4	2.3	4.3	21	
HJ023	FDD 2-312	0.8*8	0.4	9	2.3	4.3	23	

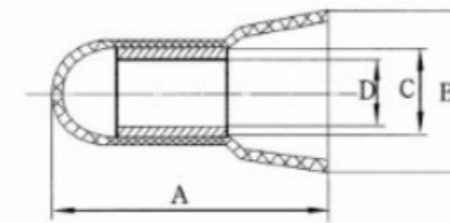
Cable Size: 4-6mm ² (AWG12-10)		Max Current: I _{MAX} =24A		Material: Copper				
CAT#	ITEM NO.	Name Tab (mm)	Thickness of Material(mm)	Dimension(mm)				Color
				B	dφ	Dφ	L	
HJ024	FDD 5.5-250	0.8*6.35	0.4	7.4	3.4	5.7	25	YELLOW
HJ025	FDD 5.5-375	1.2*9.4	0.5	10.9	3.4	5.7	29.6	

Twist-on Wire Connector



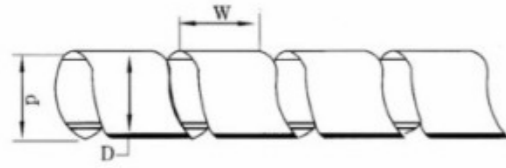
CAT#	Dimension(mm)			Wire Range		Color
	H	W	D	AWG	mm ²	
PG1	15	8.7	6.5	22-18	0.5-1.0	Grey
PB2	18	10	7.5	18-16	1.0-1.5	Blue
PO3	23	11.2	9.5	16-14	1.5-2.5	Orange
PY4	24.2	13.6	10.8	14-12	2.5-4	Yellow
PR6	27.8	16.1	12.7	12-10	4-6	Red

Close-end Wiring Connector



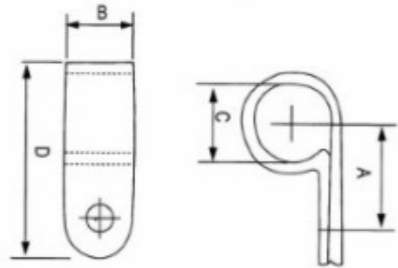
CAT#	Dimension(mm)				Wire Range	
	A	B	C	D	AWG	mm ²
CF3	17.8	7.2	5.5	2.5	22-16	1.25
CF4	21	8.2	5.8	2.9	16-14	2
CF5	22.5	9	6.7	3.9	12-10	5.5
CF6	25	10	7.8	4.5	8	8
CF7	24.2	11	9.4	5.4	8-6	10
CF8	25.6	11.8	10.2	6	6	13

Spiral Wrapping Bands



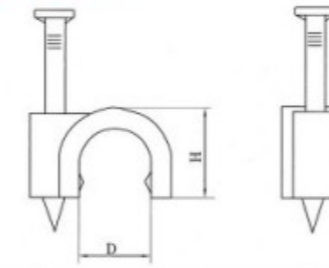
CAT#	I.D. (mm)	O.D. (mm)	Pitch (mm)	Wrapping Range	Packing M/Roll
	d	D	W	(mm)	
SWB-6	4	6	7	4-50	10
SWB-8	6	8	10.8	6-60	
SWB-10	7.5	10	11.4	7.5-60	
SWB-12	9	12	13.9	9-65	
SWB-15	12	15	15	12-75	
SWB-19	15	19	18.2	15-100	
SWB-24	20	24	19.6	20-130	

R Type Cable Clamp



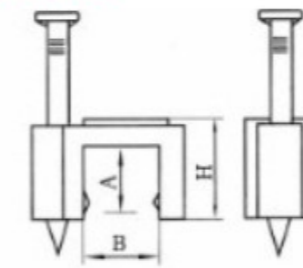
CAT#	Trade Size	Dimension (mm)			
		A	B	C	D
R0108	1/8"	9.5	9.6	3.2	19.8
R0316	3/16"	9.6	9.6	4.8	19.8
R0104	1/4"	12	10	6.38	22
R0516	5/16"	12	10	7.9	22
R0308	3/8"	12.5	12	9.5	24
R0102	1/2"	15.2	12	12.7	31
R0508	5/8"	18.2	12	15.8	34
R0304	3/4"	18.2	12	19.4	35
R1010	1"	22	12	25.4	43

Round Nail Cable Clip



CAT#	Trade Size	Dimension (mm)		
		D	H	Nail
NC04	4mm	4	5.3	1.7*15
NC05	5mm	5	6.5	1.7*15
NC06	6mm	6	8.1	1.7*17
NC07	7mm	7	8.7	1.8*20
NC08	8mm	8	9.6	1.9*20
NC09	9mm	9	10.7	2.0*22
NC10	10mm	10	11.7	2.0*25
NC12	12mm	12	12.8	2.3*25
NC14	14mm	14	14.9	2.4*32
NC16	16mm	16	16.9	2.5*35
NC18	18mm	18	20.8	2.5*37
NC20	20mm	20	23.6	2.8*40
NC22	22mm	22	25	2.8*42
NC25	25mm	25	27.7	3.0*48
NC30	30mm	30	33.1	3.2*53
NC35	35mm	35	36.6	3.5*58
NC40	40mm	40	45.2	3.5*68

Square Nail Cable Clip



CAT#	Trade Size	Dimension (mm)			
		A	B	H	Nail
NS04	4mm	3.8	4	6	1.7*15
NS05	5mm	3.8	5	6	
NS06	6mm	4.1	6	6.5	
NS07	7mm	4.7	7	7	1.8*20
NS08	8mm	5	8	7.5	
NS09	9mm	5.4	9	8.2	
NS10	10mm	5.7	10	8.6	2.0*22
NS12	12mm	6.1	12	9	
NS14	14mm	6.5	14	11.2	
NS16	16mm	8.4	16	11.6	2.3*25

H Type Nylon Terminal Block



CAT#	Rated Current (Amp)	Wire Section (mm ²)
H003	3	4
H006	6	6
H010	10	10
H015	15	12
H020	20	14
H030	30	16
H060	60	25
H080	80	30
H100	100	35
H150	150	40

Nylon Cable Tie Mounts



CAT#	Rated Current (Amp)
TM20	20x20
TM25	25x25
TM30	30x30
TM40	40x40

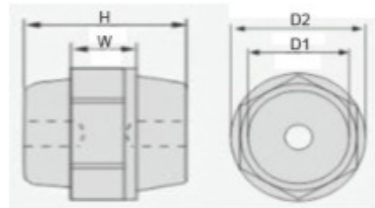
PVC Cable Markers



CAT#	Wire Section (mm ²)
EC0	0.75-1.5
EC1	0.75-3.5
EC2	3.5-8
EC3	5.2-10

SM Bus Bar Insulator

Material: BMC/SMC with Brass Insert
Operating Temperature: -40°C to 140°C



CAT#	Dimension(mm)				Tensile Strength LBS	Voltage Withstand KV	Torgue Strength FT LBS	Screw mm	Screw Depth mm
	W	H	D1	D2					
SM20	5	20	15	17	300	5	4	5	7
SM25S	6	25	15	19	400	6	5	6	8
SM25	10	25	23	30	500	6	6	6	9
SM30	10	30	27	32	550	8	8	8	11
SM35	10	35	28	32	600	10	10	8	11
SM40	10	40	33	40	650	12	12	8	11
SM45	10	45	30	36	1000	14	20	8	11
SM51	12	51	29	36	1000	15	20	8	14
SM60	13	60	34	46	1200	20	35	10	15
SM76	15.5	76	35	50	1500	25	40	10	20

SC Terminal Cable Lug

SC Terminales



Material: High Electrolytic Grade Copper with Tin Plated
Application: Ideal for Marine, Automotive or Outdoor Applications.
Meet Relevant European Standards



CAT#	Trade Size	Dimension (mm)					
		ØE	ØD	Ød	W	B	L
HSC1540	1.5mm ²	4.2	3.6	1.8	8.0	5	16
HSC1550	1.5mm ²	5.2	3.6	1.8	10.0	5	17
HSC1560	1.5mm ²	6.5	3.6	1.8	10.0	5	18
HSC2540	2.5mm ²	4.2	3.9	2.4	8.0	7	18
HSC2550	2.5mm ²	5.2	3.9	2.4	10.0	7	20
HSC2560	2.5mm ²	6.5	3.9	2.4	10.0	7	20
HSC4040	4mm ²	4.2	4.7	2.4	10.0	7	20
HSC4050	4mm ²	5.2	4.7	3.1	10.0	7	20
HSC4060	4mm ²	6.5	4.7	3.1	10.0	7	20
HSC4080	4mm ²	8.4	4.7	3.1	12.5	7	23
HSC6040	6mm ²	4.2	5.4	3.8	10.0	9	24
HSC6050	6mm ²	5.2	5.4	3.8	10.0	9	24
HSC6060	6mm ²	6.5	5.4	3.8	12.0	9	24
HSC6080	6mm ²	8.4	5.4	3.8	12.5	9	26
HSC6010	6mm ²	10.5	6.0	4.0	15.0	9	28
HSC1050	10mm ²	5.2	6.1	4.5	12.0	9	25
HSC1060	10mm ²	6.5	6.1	4.5	12.0	9	25
HSC1080	10mm ²	8.4	6.1	4.5	12.5	9	27
HSC1010	10mm ²	10.5	6.1	4.5	15.0	9	29

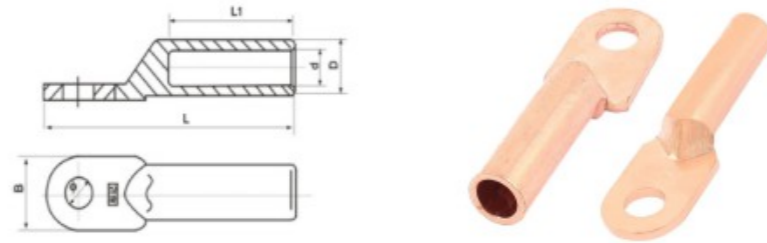
1.5mm²-1000mm² is available

DT Terminal Cable Lug

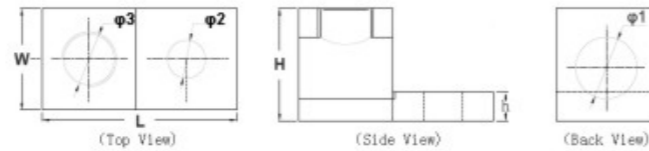
DT Terminales

Material: Copper

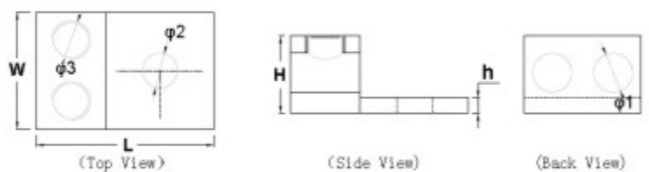
Application: Suitable for power distribution equipment, electrical equipment power wire connection.



CAT#	Trade Size	Dimension (mm)					
		Ø	D	d	L	L1	B
HDT010	10mm ²	8.5	9	5.3	62.0	28	16
HDT016	16mm ²	8.5	10	6.5	66.0	30	16
HDT025	25mm ²	8.5	11	7.0	70.0	33	18
HDT035	35mm ²	10.5	12	8.5	75.6	36	20
HDT050	50mm ²	10.5	14	9.5	85.0	38	23
HDT070	70mm ²	12.5	16	11.5	93.0	43	26
HDT095	95mm ²	12.5	18	13.5	102.0	46	28
HDT120	120mm ²	14.5	20	15.0	110.4	49	30
HDT150	150mm ²	14.5	22	16.5	117.2	51	34
HDT185	185mm ²	16.5	25	18.5	124.0	55	37
HDT240	240mm ²	16.5	27	21.0	135.0	60	40
HDT300	300mm ²	21	31	23.5	150.0	66	50
HDT400	400mm ²	21	34	26.5	158.0	75	50
HDT500	500mm ²	21	38	29.0	166.0	75	60
HDT630	630mm ²	21	45	35.0	203.0	85	80
HDT800	800mm ²	21	50	38.0	255.0	85	100



CAT#	Dimension (mm)						φ3
	L	W	H	h	φ1	φ2	
HTA250	50.8	25.4	28.6	6.4	16.0	8.3	5/8"
HTA350	57	28.5	31.8	6.4	21.0	10.3	13/16"
HTA600	81	38.1	39.7	11.1	24.0	10.3	15/16"
HTA800	85.7	44.5	49.2	12.7	27.0	16.7	15/16"



CAT#	Dimension (mm)						φ3
	L	W	H	h	φ1	φ2	
HAU2/0	37.3	31.8	20.2	4.8	11.0	6.7	7/16"
HAU250	65.1	42.1	30.2	6.4	16.0	9.9	5/8"
HAU350	73	48	31.8	6.4	16.0	14.3	5/8"
HAU600	81	61.1	39.7	11.1	24.0	13.5	15/16"

Copper Coated Steel Grounding Rod

CAT#		Description	
Pointed Non-Threaded	Double Ends Threaded	O.D.	Length
ER030812	ERT030812	3/8"	1200mm
ER030824	ERT030824	3/8"	2400mm
ER010224	ERT010224	1/2"	2400mm
ER010230	ERT010230	1/2"	3000mm
ER050818	ERT050818	5/8"	1800mm
ER050830	ERT050830	5/8"	3000mm
ER030418	ERT030418	3/4"	1800mm
ER030430	ERT030430	3/4"	3000mm

Pure Copper and Stainless Steel Grounding Rod Available.



Copper Braid Wire Conductor

CAT#	Cross Section	Size	Length
GC-CB01	75 mm ²	25*3mm	100M/Roll

Tinned Copper Available.



A Type Brass Clamps

CAT#	Rod Dia. (mm)
GC-A01	11
GC-A02	14
GC-A03	16
GC-A05	18
GC-A06	15
GC-A07	20
GC-A08	25
GC-A09	27



C Type Brass Clamps for Solid & Cable

CAT#	Conductor Size
CCT-16	11.5-16mm ²
CCT-20	14-20mm ²
CCT-26	21-26mm ²
CCT-44	27-44mm ²
CCT-60	45-60mm ²
CCT-76	61-76mm ²
CCT-98	77-98mm ²
CCT-122	99-122mm ²
CCT-154	123-154mm ²
CCT-190	155-190mm ²
CCT-240	191-240mm ²
CCT-288	241-288mm ²
CCT-365	289-365mm ²
CCT-450	366-450mm ²

Tin Plated Type Available



Brass Split Bolt Connector



CAT#	Conductor	Dimension (mm)		
	mm ²	L	H	S
SBC01	10	25	3	10
SBC02	16	27	5	12
SBC03	25	27	7	14
SBC04	35	35	9	18
SBC05	50-70	41	12	24
SBC06	90-120	44	14	25
SBC07	150-185	55	18	30
SBC08	200-240	57	19	32

Customized Type with Tail Bolt Available

Conductors Contact Clip & Clamp

CAT#	Description
GC-T01	For 25*3mm Tape Conductor Bonding
GC-T03	For 25*3mm Tape Conductor Bonding
GC-T04	For 25*3mm Tape Conductor Bonding
GC-W03	For 16-120mm ² Round Conductor Cross Bonding
GC-T09	For 16-120mm ² Round Conductor with 25*3mm Tape



U-Type Clamp & Mounting Bracket

CAT#	Description
GC-U01	For Φ20-30mm Round Conductor with 25*3mm Tape
GC-U03	For Φ20-30mm Round Conductor with 25*3mm Tape
GC-U04	For Φ15-20mm Round Conductor with 35-70mm ² Wire
GC-U06	For Φ20-30mm Round Conductor with 70-120mm ² Wire
GC-U10	For Φ15-25mm Round Conductor with 20*3mm Tape



Porcelain Terminal Block/Knife Switch/Socket/Insulator



1 Pole 2 Holes

CAT#	Current				
	5A	10A	15A	30A	60A
General	PTB0512	PTB1012	PTB1512	PTB3012	PTB6012
High Frequency	PTB0512H	PTB1012H	PTB1512H	PTB3012H	PTB6012H
With Glazed	PTB0512-1	PTB1012-1	PTB1512-1	PTB3012-1	PTB6012-1



2 Poles 5 Holes

CAT#	Current				
	5A	10A	15A	30A	60A
General	PTB0525	PTB1025	PTB1525	PTB3025	PTB6025
High Frequency	PTB0525H	PTB1025H	PTB1525H	PTB3025H	PTB6025H
With Glazed	PTB0525-1	PTB1025-1	PTB1525-1	PTB3025-1	PTB6025-1



3 Poles 8 Holes

CAT#	Current				
	5A	10A	15A	30A	60A
General	PTB0538	PTB1038	PTB1538	PTB3038	PTB6038
High Frequency	PTB0538H	PTB1038H	PTB1538H	PTB3038H	PTB6038H
With Glazed	PTB0538-1	PTB1038-1	PTB1538-1	PTB3038-1	PTB6038-1



3P100A (Double throw)



3P200A (Single throw)



PPS412 (10A)



PPS423



802-4



802-5

Manual Bending Machine



Includes:
1 x Main Frame Body
1 x Pipe Vice
1 x Extension Handle
20/25/32mm Formers

CAT#	Size
BMH25	20-25mm
BMH32	20-32mm

Manual Threading Kit



Includes:
1 x Detachable Body
2 x 20/25mm Dies
2 x 20/25mm Die Guides
1 x Plastic Portable Case

CAT#	Size
MTK	20-25mm

Threading Die



CAT#	Size
CD20	20mm
CD25	25mm

Aluminum Conduit Bender



CAT#	Size
CB050	1/2"
CB075	3/4"
CB100	1"

Malleable Iron Conduit Bender



CAT#	Size
MCB050	1/2"
MCB075	3/4"
MCB100	1"

Galvanized Bending Spring



CAT#	Size
BS5520	20mm
BS5525	25mm
BS5532	32mm

Bending Spring



CAT#	Size
XB5520	20mm
XB5525	25mm
XB5532	32mm

Metal Cable Puller Type A (Galvanized)



CAT#	Length(M)	Size(mm)
ZA3205	5	3.2*0.5
ZA3210	10	3.2*0.5
ZA3215	15	3.2*0.5
ZA3220	20	3.2*0.5
ZA3225	25	3.2*0.5
ZA3230	30	3.2*0.5

Metal Cable Puller Type B (Galvanized)



CAT#	Length(M)	Size(mm)
ZB3205	5	3.2*0.5
ZB3210	10	3.2*0.5
ZB3215	15	3.2*0.5
ZB3220	20	3.2*0.5
ZB3225	25	3.2*0.5
ZB3230	30	3.2*0.5

Metal Cable Puller Type C (Galvanized)



CAT#	Length(M)	Size(mm)
ZC3205	5	3.2*0.5
ZC3210	10	3.2*0.5
ZC3215	15	3.2*0.5
ZC3220	20	3.2*0.5
ZC3225	25	3.2*0.5
ZC3230	30	3.2*0.5

Metal Cable Puller Type A (Phosphated)



CAT#	Length(M)	Size(mm)
MA3205	5	3.2*0.5
MA3210	10	3.2*0.5
MA3215	15	3.2*0.5
MA3220	20	3.2*0.5
MA3225	25	3.2*0.5
MA3230	30	3.2*0.5



Metal Cable Puller Type B (Phosphated)

CAT#	Length(M)	Size(mm)
MB3205	5	3.2*0.5
MB3210	10	3.2*0.5
MB3215	15	3.2*0.5
MB3220	20	3.2*0.5
MB3225	25	3.2*0.5
MB3230	30	3.2*0.5



Metal Cable Puller Type C (Phosphated)

CAT#	Length(M)	Size(mm)
MC3205	5	3.2*0.5
MC3210	10	3.2*0.5
MC3215	15	3.2*0.5
MC3220	20	3.2*0.5
MC3225	25	3.2*0.5
MC3230	30	3.2*0.5



Metal Fishing Tape in Reusable Small Case

CAT#	Length(M)	Diam.(mm)
FS1310	10	1.3*3mm
FS1315	15	1.3*3mm
FS1320	20	1.3*3mm
FS1325	25	1.3*3mm
FS1330	30	1.3*3mm



Metal Fishing Tape in Reusable Big Case

CAT#	Length(M)	Diam.(mm)
FB1330	30	1.3*3mm
FB1340	40	1.3*3mm
FB1350	50	1.3*3mm
FB1360	60	1.3*3mm
FB13100	100	1.3*3mm



Nylon Fishing Tape in Reusable Case

CAT#	Length(M)	Diam.(mm)
FP4015	15	Φ4
FP4020	20	Φ4
FP4030	30	Φ4
FP4040	40	Φ4



Nylon Cable Puller

CAT#	Length(M)	Size(mm)
NC3005	5	Φ3
NC3010	10	Φ3
NC3015	15	Φ3
NC3020	20	Φ3
NC3025	25	Φ3
NC3030	30	Φ3



3 Core Twisted Polyester Cable Puller

CAT#	Length(M)	Size(mm)
3PY6015	15	Φ6
3PY6020	20	Φ6
3PY6025	25	Φ6
3PY6030	30	Φ6
3PY6040	40	Φ6
3PY6050	50	Φ6



Terminal Crimping Tools

For Insulated Terminals

CAT#	AWG	mm ²
TCT01	22~18 / 18~14 / 12~10	0.5~1.0 / 1.5~2.5 / 4~6



For Cord-end Terminals

CAT#	AWG	mm ²
TCT02	28~7	0.08~10